



November 2023 – May 2024 Ongoing Monitoring Report RAAF Base Richmond

KEY POINTS

- ▶ **Defence undertakes monitoring on and around RAAF Base Richmond to understand per- and polyfluoroalkyl substances (PFAS) movement and concentrations in water and sediment.**
- ▶ **Monitoring results inform PFAS management and remediation activities.**
- ▶ **Defence started ongoing monitoring in 2019.**
- ▶ **PFAS risks to people or the environment remain stable since the initial detailed investigations undertaken in 2019.**

What is an Ongoing Monitoring Report?

An Ongoing Monitoring Report collates and interprets PFAS sampling results from the Ongoing Monitoring Plan.

The Ongoing Monitoring Plan outlines what Defence is sampling (e.g. soil, water, sediment), where the sampling will take place, and how often.

This ensures Defence maintains an up-to-date understanding of any risk that the community may be exposed to from PFAS coming from the base. This understanding helps us work out the best way to minimise that risk.

Precautionary advice

The NSW Environment Protection Authority has issued precautionary advice for some residents in the area surrounding RAAF Base Richmond. The NSW EPA has contacted these residents and provided them with advice. For further information visit:

www.epa.nsw.gov.au/Your-environment/Contaminated-land/PFAS-investigation-program/pfas-investigation-sites/Richmond-RAAF-Base

Background

The Ongoing Monitoring Report covers water and sediment sampling undertaken between November 2023 and May 2024, from locations on and around RAAF Base Richmond. The report compares new sampling results to past results collected since 2019.

What does the Ongoing Monitoring Report tell us?

Based on the samples collected on and around RAAF Base Richmond, PFAS contamination in the environment is mostly stable when compared to previous results. This means concentration levels are neither increasing or decreasing. Higher PFAS concentrations were recorded in groundwater at two known source areas, the fire station and airfield foam cannon testing area. These concentrations are due to the movement of PFAS from impacted soil to groundwater.

In 2025, soil remedial works are planned to commence at the fire station and airfield foam cannon testing area. Defence anticipates concentrations at these source areas will reduce following the remedial works.

The findings from the Ongoing Monitoring Report show that PFAS risks to people or the environment remain stable since the detailed investigations undertaken in 2019. For more information, see the Human Health Risk Assessment on the Defence website.

Number of samples collected and analysed

Groundwater	Surface water	Sediment
Groundwater is water beneath the earth's surface. It often supplies bores, wells or springs.	Surface water is water that collects on the ground and can be in the form of creeks, rivers, lakes, wetlands, oceans and more.	Sediment is made of broken down remains of rocks, minerals, plants, and animals that have moved to a new location.
153 samples collected from 80 groundwater locations.	41 samples collected from 21 surface water locations.	41 samples collected from 21 sediment locations

Next steps

Over the next 12 months Defence will:

- continue monitoring to further understand any changes in PFAS concentrations, with the next sampling scheduled for May 2025.
- continue to keep the community informed about the management and ongoing monitoring of PFAS on and around RAAF Base Richmond.

Further information

A full copy of the Ongoing Monitoring Report is available on the Defence website at: www.defence.gov.au/about/locations-property/pfas-management-sites/raaf-base-richmond

Contact us



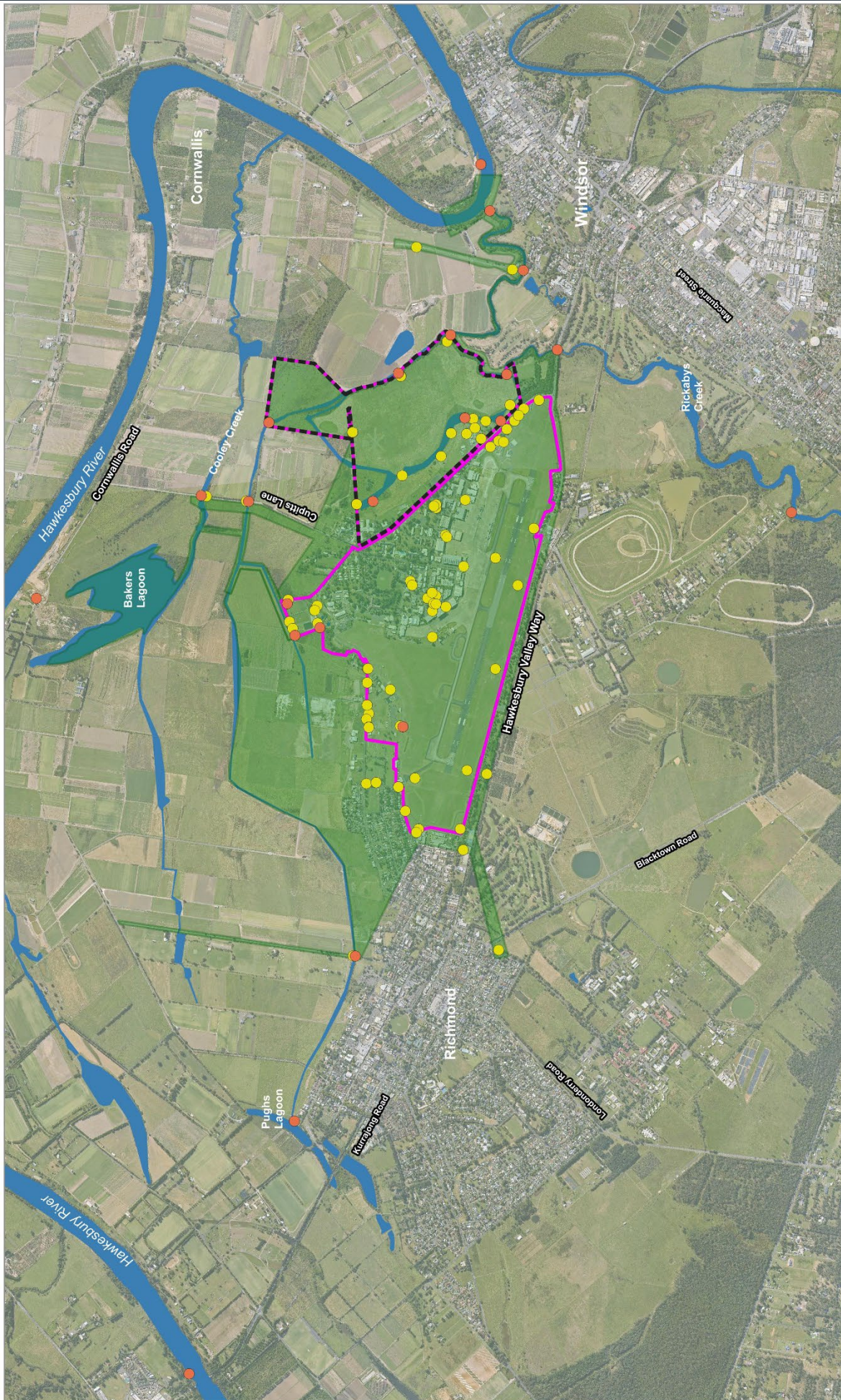
1800 333 362



pfas.enquiry@defence.gov.au

Scan the QR code to find out more about Defence's PFAS Investigation and Management Program.





DATA SOURCES
Imagery: MaxARCS, 2024

SCALE 1:25,000
200 400 600 m

nation
partners

- Legend**
- Defence Site Boundary
 - Management Area
 - Rickabays Drop Zone
 - Surface Water
 - Co-located Surface Water and Sediment Sampling Locations
 - Groundwater Sampling Locations

Figure 1: Sampling Locations
RAAF Base Richmond
Ongoing Monitoring Report

COPYRIGHT
The images and information contained in this document are the property of Nation Partners Pty Ltd. Use or copying of this document in whole or in part without the prior written permission of Nation Partners Pty Ltd is prohibited. Nation Partners Pty Ltd does not warrant that this document or any information contained herein is accurate, complete, or free from error. Nation Partners Pty Ltd is not responsible for any loss or damage, or any delay, arising from reliance upon information provided herein.

RAAF Base Richmond sampling locations