



RAAF Base Tindal

Ongoing Monitoring Report (July 2023 – April 2024)

Defence undertakes monitoring on and around RAAF Base Tindal to understand per- and poly-fluoroalkyl substances (PFAS) movement and concentrations in groundwater, surface water and biota (fish and crustaceans in Katherine River). The monitoring results inform PFAS management and remediation activities.

Monitoring requirements are set out in an ongoing monitoring plan. Defence started ongoing monitoring on and around RAAF Base Tindal in November 2017.

What is an Ongoing Monitoring Report?

An ongoing monitoring report collates and interprets PFAS sampling results from the ongoing monitoring plan.

Ongoing Monitoring Report (July 2023 – April 2024)

This report covers groundwater, surface water and select biota sampling conducted between July 2023 to April 2024, from locations on and around RAAF Base Tindal. The ongoing monitoring report also compares the results of the new sampling data to historical data collected since 2017.

What does the Ongoing Monitoring Report tell us?




Sampling data indicates that the levels of PFAS contamination in groundwater were consistent with historical results. Results suggest that the area of contamination in groundwater (or plume size) is unchanged, except for Cossack, where PFAS may be migrating westward. Defence are continuing to monitor in this area to confirm these changes.

PFAS in the groundwater is seasonally influenced, with higher concentrations being detected during the mid to late wet season.

Surface water results show that PFAS concentrations decreased in Tindal Creek and remained unchanged in Katherine River and Katherine Hot Springs.

Biota sampling results remain similar to historical records.

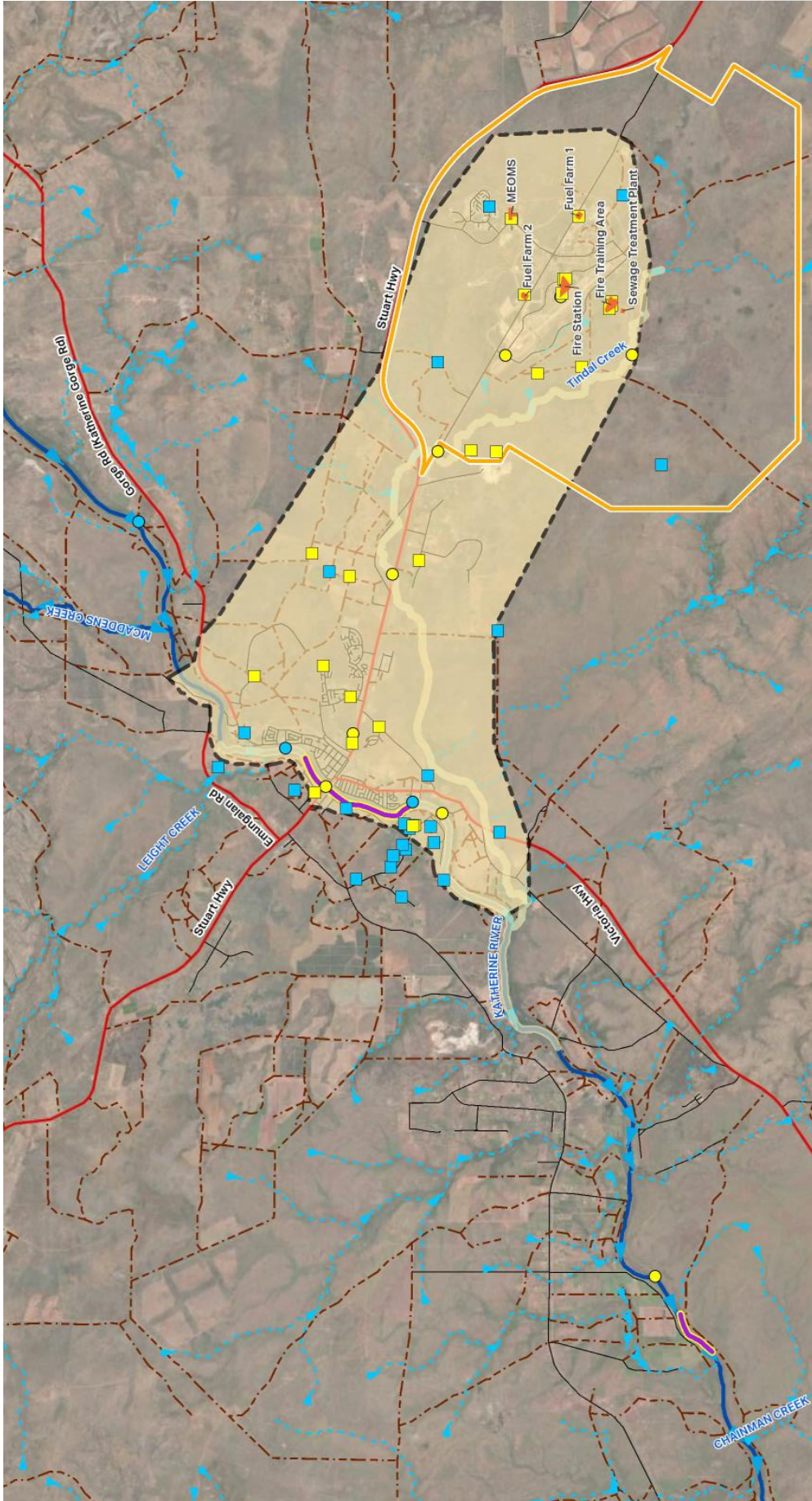
Number of samples collected and analysed during the 2023-2024 monitoring period

<p>GROUNDWATER</p> 	<p>Groundwater is water beneath the earth's surface. It often supplies bores, wells or springs.</p>	<p>157 samples collected from 49 groundwater monitoring locations.</p>
<p>SURFACE WATER</p> 	<p>Surface water is water that collects on the ground and can be in the form of creeks, rivers, lakes, wetlands, oceans and more.</p>	<p>30 samples collected from 13 surface water locations.</p>
<p>BIOTA</p> 	<p>Biota is the animals and plants within a particular area such as edible fish and crustaceans.</p>	<p>41 samples collected from 2 locations around the Galloping Jacks Boat Ramp and Stuart Highway Boat Ramp on Katherine River.</p>

Refer to the map on page 2 for groundwater, surface water and biota sampling locations and results.

Precautionary advice

Northern Territory (NT) Health has issued precautionary dietary advice for frequent consumption of wild caught fish, shellfish and crustaceans from the Katherine River and Tindal Creek. For further information, please refer to the 'Fishing in Katherine' fact sheet via: [Fishing in Katherine](#)



Legend

Groundwater Monitoring Location Results

- Detected below drinking water guideline
- Detected above drinking water guideline but below recreational guideline

Surface Water Monitoring Location Results

- Detected below drinking water guideline
- Detected above drinking water guideline but below recreational guideline

RAAF Base Tindal

- RAAF Base Tindal Management Area
- Source Areas
- Highway
- Road
- Track

Katherine River

- Drainage
- Biota Sampling Locations

RAAF Base Tindal PFAS Management Area

Water sampling results for 2023 dry season and 2024 wet season



Next steps

Defence will continue monitoring groundwater, surface water and biota on and around RAAF Base Tindal to understand any changes in PFAS concentrations that may appear over time.

Read the full RAAF Base Tindal Ongoing Monitoring Report

Scan the QR code below to access the report via the RAAF Base Tindal webpage:



Or, use the link below to access the Ongoing Monitoring Interpretive Report:
www.defence.gov.au/about/locations-property/pfas/pfas-management-sites/raaf-base-tindal

Translating and Interpreting Service (TIS National)



For translation assistance, TIS National provides interpreting services 24 hours a day via telephone from anywhere in Australia for the cost of a local call*.

For more information contact 131 450 or visit: www.tisnational.gov.au/

**Calls from mobile phones may attract a higher rate.*

Keeping you informed

Defence will continue to keep the community informed about the management and ongoing monitoring PFAS on and around RAAF Base Tindal.

Looking for more information?



Scan the QR code below to find out more about Defence's PFAS Investigation and Management program or visit:

www.defence.gov.au/pfas/



Alternatively, you can contact:



1800 316 813



pfas.tindal@truenorthcomm.com.au

Media enquiries



Media enquiries should be directed to Defence Media via email at:
media@defence.gov.au