



Community Consultation Session

PFAS Investigation and Management Program

RAAF Base Amberley

PFAS Investigation and Management Program update

Tuesday 6 August





Acknowledgement of Country

We respectfully acknowledge the Yuggera and the Ugarapul people, the traditional custodians of the land on which we are meeting today.

Defence acknowledges the Traditional Custodians of Country throughout Australia. Defence recognises their continuing connection to traditional lands and waters and would like to pay respect to their Elders both past and present.

Defence would also like to pay respect to the Aboriginal and Torres Strait Islander peoples who have contributed to the defence of Australia in times of peace and war.





Welcome

The Hon Shayne Neumann MP, Member for Blair



Outline



About PFAS

- What are PFAS?
- How PFAS moves in the environment
- PFAS and health

How Defence responds to PFAS contamination

- Led by science
- Investigation and planning
- Remediating and managing

PFAS at RAAF Base Amberley

- Initial investigations
- Remediation and management planning
- Groundwater, surface water and sediment monitoring
- Precautionary advice
- Next steps

Questions



What are PFAS?





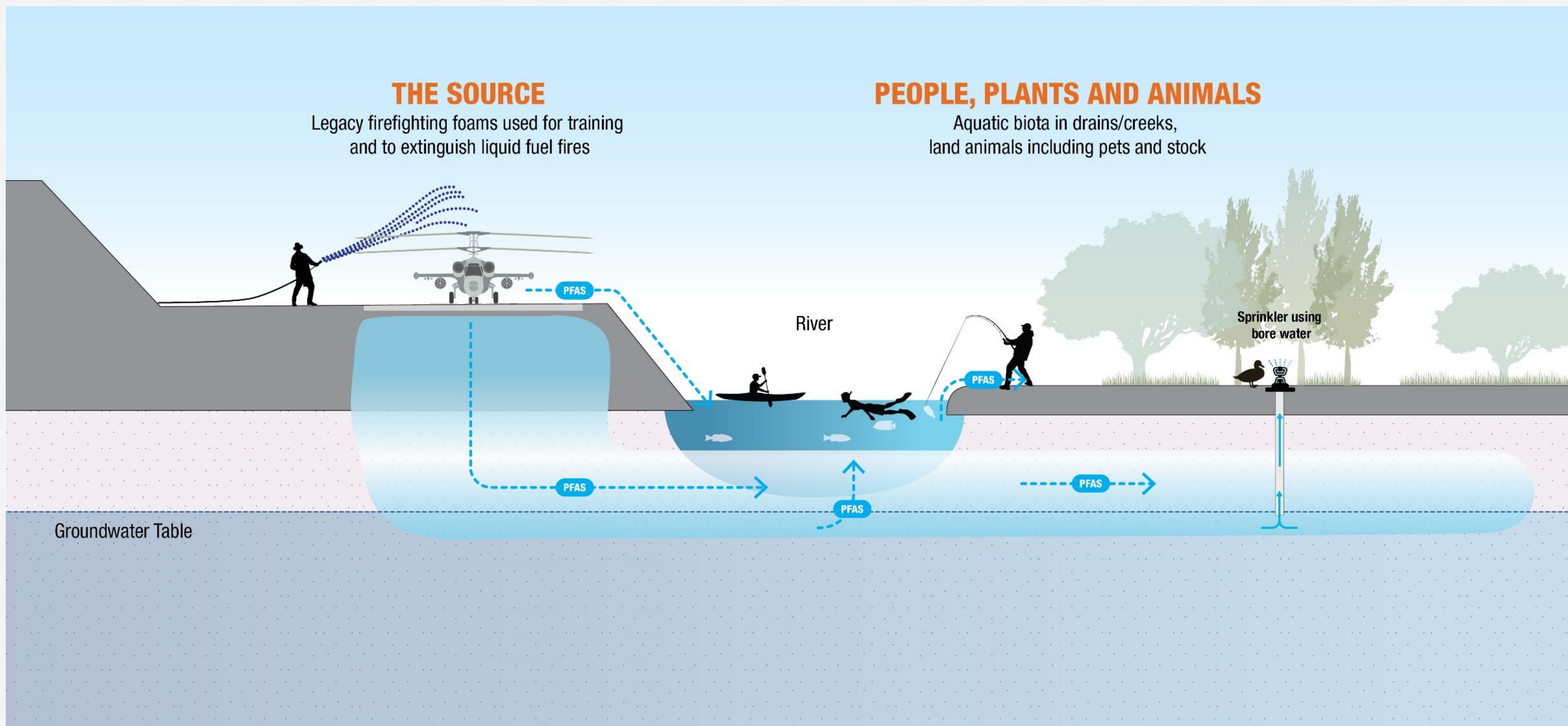
How PFAS moves in the environment

THE SOURCE

Legacy firefighting foams used for training and to extinguish liquid fuel fires

PEOPLE, PLANTS AND ANIMALS

Aquatic biota in drains/creeks, land animals including pets and stock





Our response

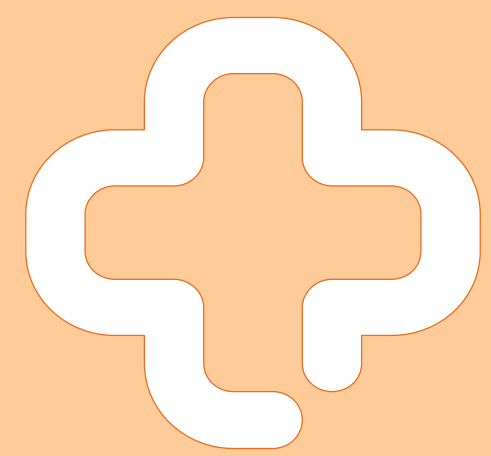
- The PFAS Investigation and Management Program was established in 2015.
- Responding to PFAS contamination is a complex issue and requires an effective and evidence-based approach.
- Defence works with other agencies and industries in Australia and internationally to share knowledge and work together to ensure the most appropriate remediation techniques are used and to continuously improve our management approach.



Soil sample taken as part of the Defence and CSIRO collaborative research program.



Australian health guidelines



Defence relies on health guidance from the Department of Health and Aged Care, Food Standards Australia New Zealand and relevant state authorities.

The Commonwealth Government takes a precautionary approach and recommends PFAS exposure is minimised where possible.



Research on the health affects of PFAS undertaken in Australia and internationally is continuously evolving. Defence will respond accordingly as new guidelines and health advice become available.



Health-based guidance values

PFOS

PFOA

PFHxS



Drinking water guideline



Recreational water guideline



Our approach



Phase 1

Investigating and planning

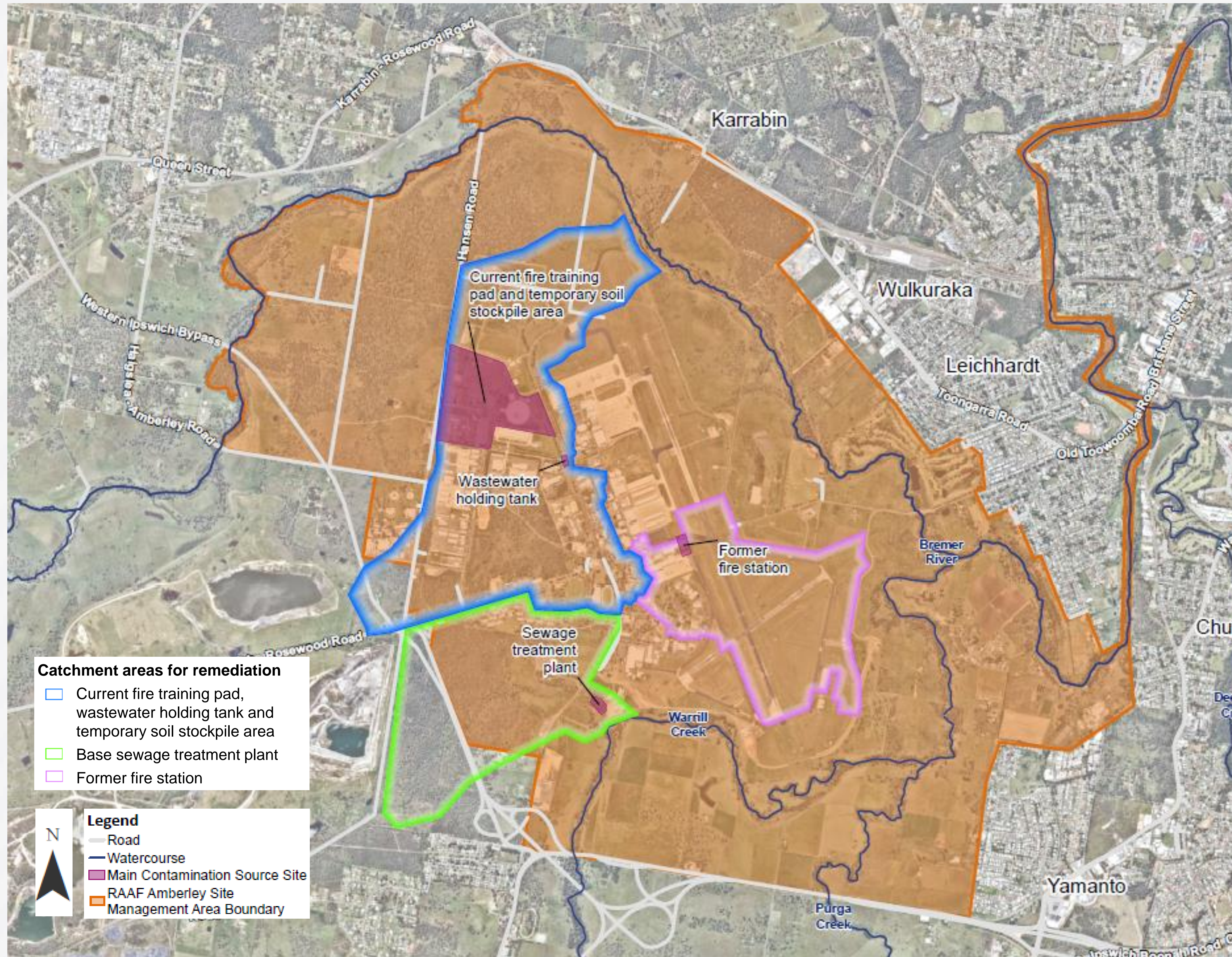


Phase 2

Remediating, managing and
ongoing monitoring



Management area and source areas



Source areas

- PFAS source areas at RAAF Base Amberley are found where firefighting foam was previously used, stored or disposed of.
- Five key source areas include:
 - current fire training pad
 - wastewater holding tank
 - temporary soil stockpile area
 - base sewerage treatment plant
 - former fire station.
- Remediation will focus on managing surface water catchments to reduce PFAS migration.
- Three revised remediation action plans will be finalised ahead of further works commencing.

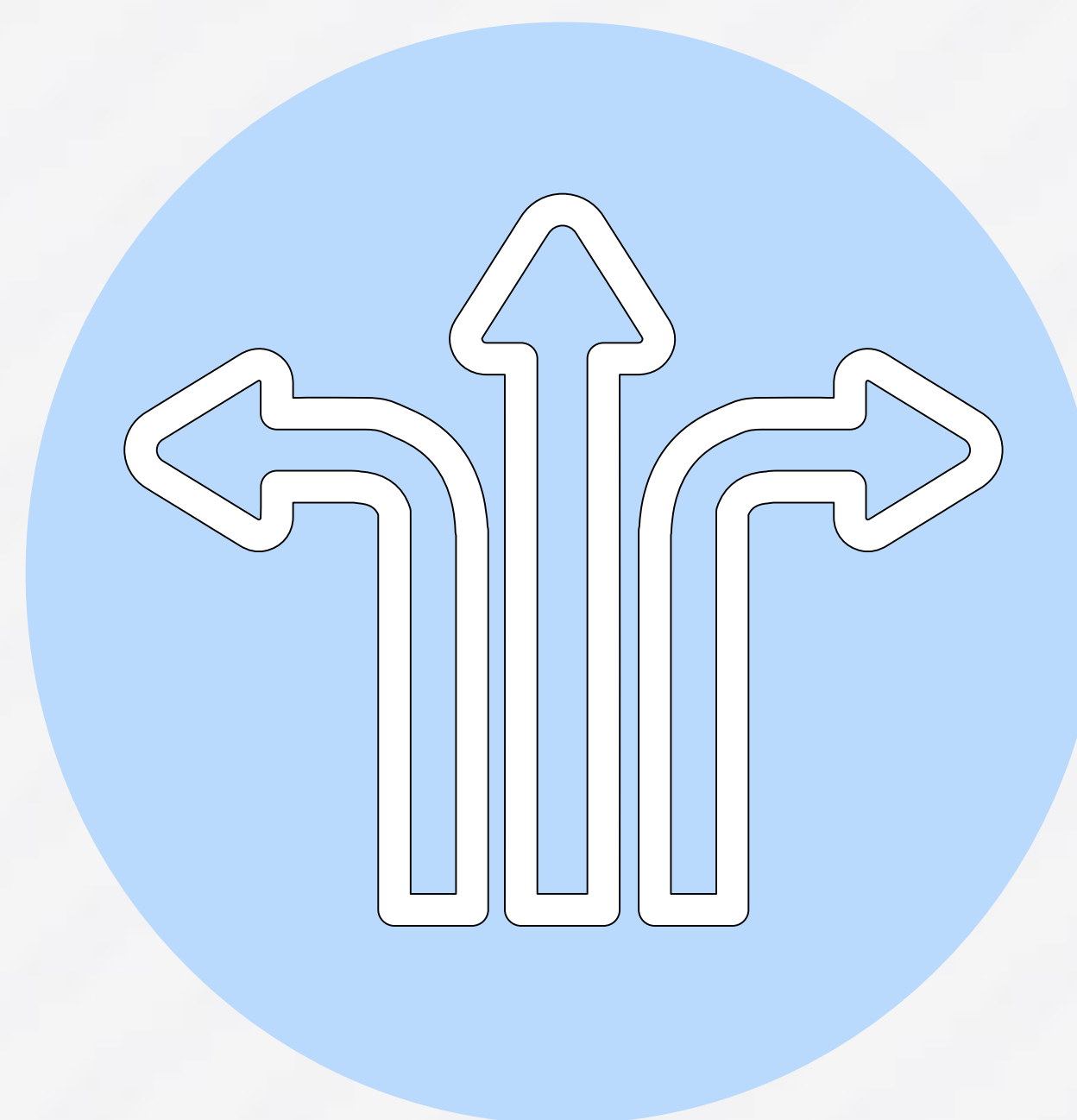


Management approach



Source controls

Manage the source areas



Pathway controls

Targets the paths by which PFAS leaves the base




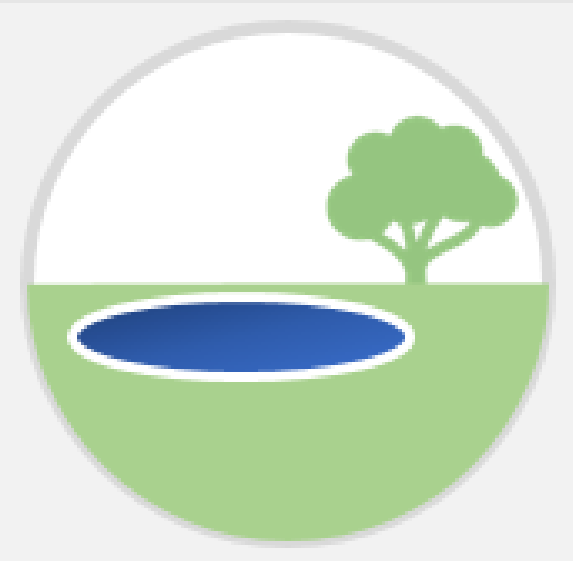
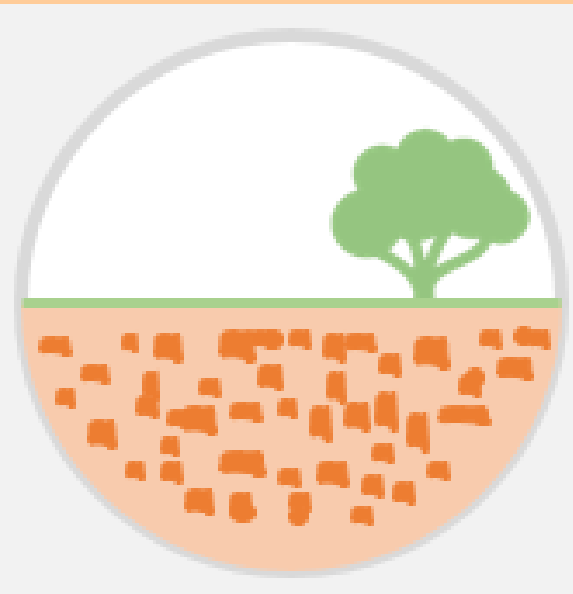
Exposure controls

Follow existing precautionary advice to reduce exposure



Ongoing monitoring results

Number of samples collected and analysed March 2021 – April 2024

<p>GROUNDWATER</p> 	<p>Groundwater is water beneath the earth's surface. It often supplies bores, wells or springs.</p>	<p>271 samples collected from 40 groundwater monitoring locations on and off base.</p>
<p>SURFACE WATER</p> 	<p>Surface water is water that collects on the ground and can be in the form of creeks, rivers, lakes, wetlands, oceans and more. It also accumulates from rainfall.</p>	<p>327 samples collected from 49 surface water locations on and off base.</p>
<p>SEDIMENT</p> 	<p>Sediment is made of broken down remains of rocks, minerals, plants, and animals that is moved and deposited to a new location.</p>	<p>338 samples collected from 49 sediment locations on and off base.</p>

Recent key findings

- The findings from the most recent ongoing monitoring report do **not** suggest a change in any potential exposure risks for the community or the environment
- The highest levels of PFAS contamination were at known, on-base source areas.
- Slight increases recorded in several groundwater locations along the base boundary to the west and south-east..
- Community members should continue following Queensland Health's precautionary advice for fish consumption.
- The 2021-2023 ongoing monitoring report and factsheet is available on the Defence website.



Remediation at RAAF Base Amberley – a multi phased approach



Remediation of source areas aims to reduce PFAS leaving the base.



Defence is developing remediation action plans for three major surface water catchment areas.



Remedial works will be completed progressively through to 2028.



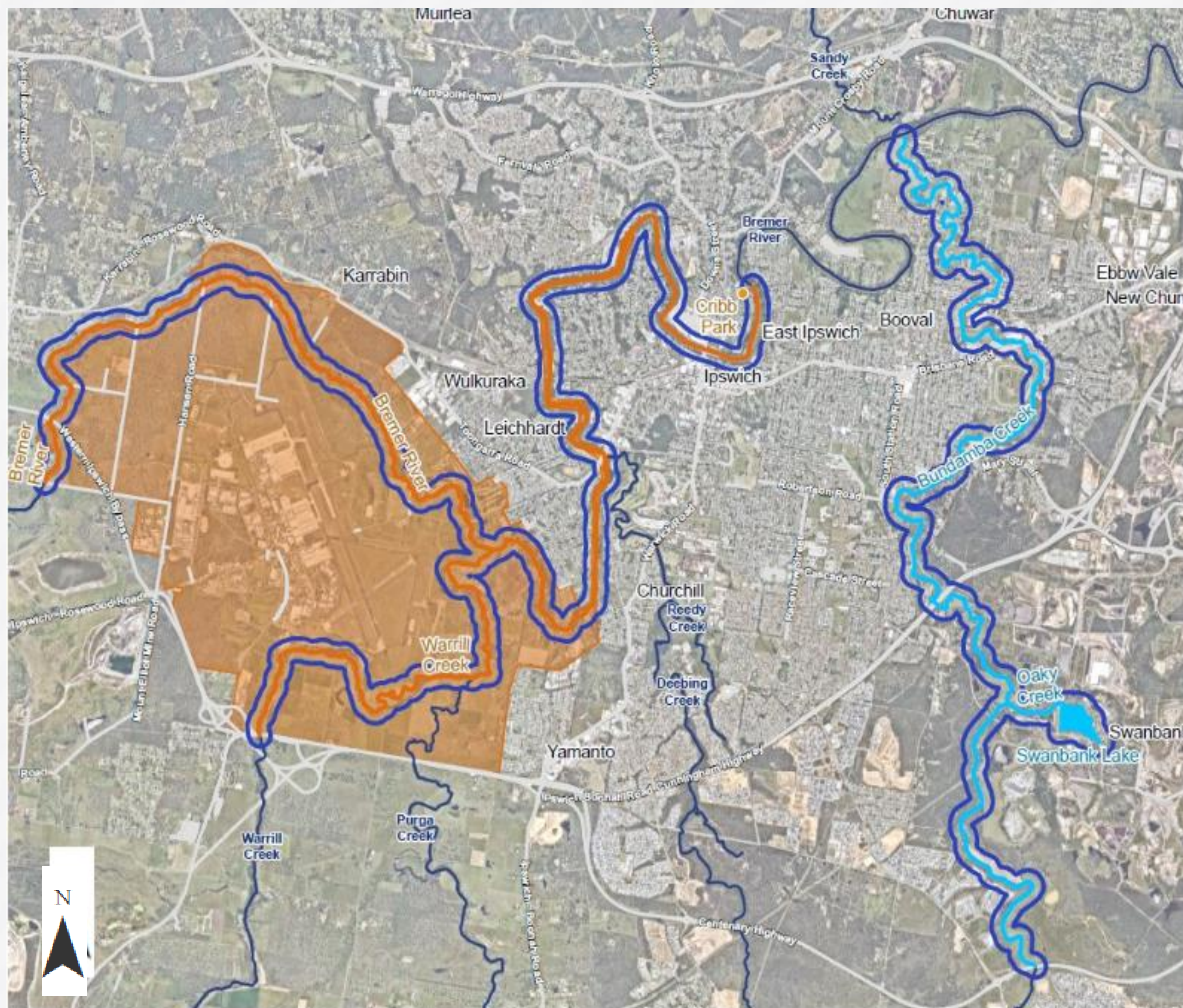
Ongoing monitoring will continue throughout, and beyond the remediation period.



Defence will continue to keep the community informed and publish monitoring data.



Precautionary health advice



Precautionary health advice remains in place.

Fish caught in the below areas should **not** be consumed.

- Bremer River in areas adjacent to RAAF Base Amberley and downstream to Cribb Park, Ipswich
- Warrill Creek adjacent to RAAF Base Amberley.

The areas (shown in **blue** on the map) contain PFAS from other sources, not RAAF Base Amberley):

- Swanbank Lake and Oaky Creek
- Bundamba Creek downstream of the Centenary Highway.

In all of these areas, fish should not be eaten. All fishing should be catch and release only.



Next steps

Action 1 – Continue monitoring groundwater, surface water and sediment

Action 2 – Revise the PFAS Management Plan

Action 3 – Upgrade the monitoring well network

Action 4 – Develop three remediation action plans

Action 5 – Commence new remediation works

Action 6 – Continue to keep the community informed



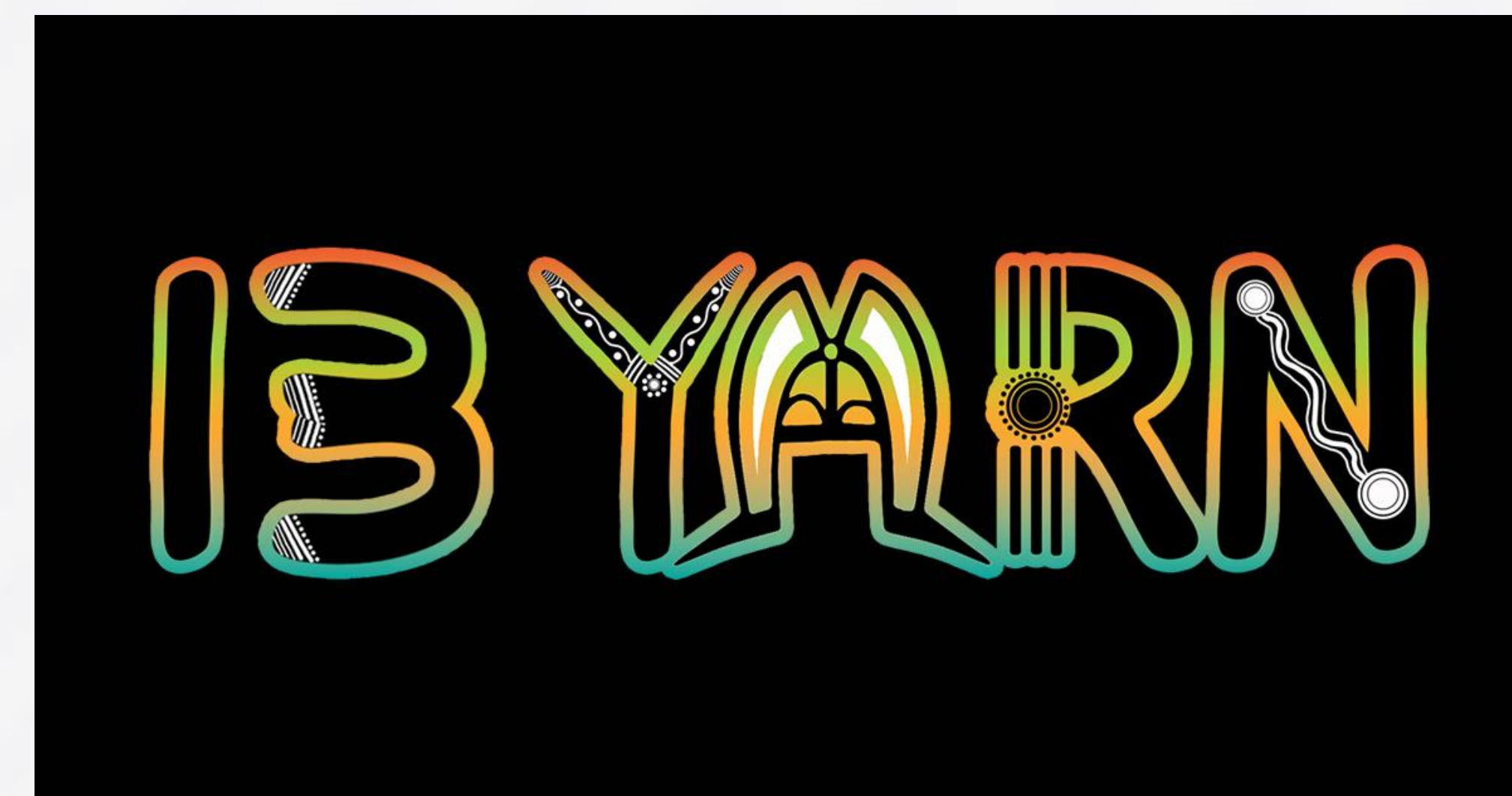
Support



Australian Government
Department of Health and Aged Care



Australian Government
Department of Veterans' Affairs





Questions



Contact us



Phone: 1800 333 362



Email: pfas.enquiry@defence.gov.au



Website: www.defence.gov.au/about/locations-property/pfas/pfas-management-sites/raaf-base-amberley