



# Method of Working Plan YAMB 02/2024

DASR.139 – Aerodromes

Amberley: P0010 National Airfield Works Program – Phase 1

## Key Dates

Approval of MOWP	17 May 24
Commencement of Works	03 Jun 24
Completion of Works	19 Aug 24
Expiry of MOWP	30 Aug 24

## Table of contents

1	Works Information .....	3
2	Restrictions To Aircraft Operations .....	5
3	Restrictions to the Works Contractor.....	11
4	Aerodrome markers, markings and lights.....	14
5	Administration .....	16

All works must be carried out in accordance with the MOWP.

**TM Evans**  
 Commanding Officer  
 No 23 Squadron

Department of Defence  
 AMBERLEY QLD 4306

17 May 2024

**S Benson**  
 Base Manager  
 RAAF Base Amberley

Department of Defence  
 AMBERLEY QLD 4306

17 May 2024

## Preface

### Authority

*(Part 139 MOS – 10.03)*

This MOWP is issued in accordance with DASR 139 and Amberley Aerodrome Manual (ADMAN).

Requests or proposals to amend or vary the MOWP, as well as queries on its content or meaning, are to be directed to the BAEO.

All works at Amberley Aerodrome are to be conducted in accordance with:

1. Amberley Aerodrome Manual, Chapter 3, Version 4 dated 31 Jan 2020
2. CASA Advisory Circular 139-20(0) – Safe planning and conduct of aerodrome works, dated March 2007

The following signatories recognise the provisions and restrictions in this MOWP and agree to execute the works in accordance to those provisions and restrictions.

Base Aerodrome Engineering Officer FLTLT Blake Fumberger	Sign	Date
Project Manager Lindsay Murray	Sign	Date
Works Manager Danny Keough	Sign	Date 15/05/2024

### Amendment record

*(Part 139 MOS – 10.03)*

Revisions to this MOWP are dated and a new version number assigned accordingly. In addition to recording the date of change for each section or page of this manual, a summary of the changes made is also recorded.

Version no.	Date of change	Parts and page	Summary of change(s)
1.0	17 May 24	All	Initial issue

### Distribution list

*(Part 139 MOS – 10.02(2)(7))*

A distribution list is available at Appendix A.

Persons printing this manual should be aware that any hard copies are uncontrolled and may not be the most up-to-date version.

# 1 Works Information

## 1.1 Description of Work

*(Part 139 MOS – 16.02a)*

This Method of Working Plan (MOWP) details Phase 1 of resurfacing and lighting upgrades being delivered at RAAF Base Amberley through **P0010 National Airfield Works Program**. The periods of restriction have been identified to minimise disruptions to aircraft operators and will be reviewed if operationally necessary.

### 1.1.1 Scope of works

For all stages, the works may comprise any of the following:

- Asphalt Resurfacing Works – Milling and replacement of asphalt pavement
- Aerodrome Drainage Works – Repair and construction of new drainage networks
- Aeronautical Ground Lighting – Installation of Tactical Landing Box Lighting, replacement of MAG and TACAN signage
- Visual Aids and Markers – Painting of visual markers on reconstructed surfaces.

### 1.1.2 Affected facilities

As a result of the works outlined above, it is anticipated that the following facilities will be affected:

- Runway 04/22;
- Taxiways A, B, H, J, Q & W3;
- Southern Apron
- Spartan Apron

### 1.1.3 Definitions

<b>Work Area</b>	A Work Area is an imaginary boundary placed around a portion of the airfield to determine the footprint of a work site. The work area shall be supported by MOWP sketches/drawings which show how Fulton Hogan intend to safely control the work area through the use of unserviceability cones, displaced thresholds and temporary lights and line marking.
<b>RTS</b>	Return to Service (RTS) Describes a work activity / shift in which the works contractor is required to vacate and reinstate the work areas back to a nominated extent and to allow for aircraft traffic as detailed within the Stage description and associated NOTAM.

## 1.2 Execution of Work

*(Part 139 MOS – 16.02b;c)*

Works will be carried out in accordance with the CASA Manual of Standards Part 139 – Aerodromes where applicable.

If works are not completed during the stage, consultation with the Base Aerodrome Engineering Officer (BAEO) will be undertaken to have the area NOTAM'd unserviceable until the operational status of the area can be rectified to allow for safe aircraft operations.

The following construction activities are to be undertaken at RAAF Base Amberley. For a diagrammatic representation of the work stages, refer Appendix B.

Stage	Duration	Start	Finish
Stage 1 – Taxiway A	14 Days	03 Jun 24	17 Jun 24
Stage 2 – Taxiway A and Runway 04/22	29 Days	18 Jun 24	17 Jul 24
Stage 3 – Taxiway A	32 Days	18 Jul 24	19 Aug 24

The actual date and time of commencement will be advised by a NOTAM, to be issued not less than 14 days before work commences. All times and dates listed in this MOWP are listed as Australian Eastern Standard Time (AEST), UTC+10.

The contractor will communicate with the BAEO on weekly basis to advise of upcoming works within a two (2) week schedule to outline any potential change to construction dates for stakeholder engagement.

### 1.2.1 Work Hours and timing

The construction working hours for night shift construction activities will be 1800 to 0600 and 0600 to 1800 for day shift construction activities. The construction activities will be undertaken Monday night to Friday night for night shift, and Monday through to Friday for Day shift. Saturdays or Saturday days and nights may be used as construction shifts, through discussion and agreement with the Base providing adequate notice to stakeholders.

## 2 Restrictions to Aircraft Operations

(Part 139 MOS – 16.03)

### 2.1 Restrictions by stage

(Part 139 MOS – 16.03.5)

Any restrictions to aircraft operations on the manoeuvring area or in the approach and take-off areas have been identified in drawings of each stage of the works, at Appendix B.

#### 2.1.1 Stage 1

<b>Dates</b>	03/06/2024 to 17/06/2024	<b>Stage Timings</b>	24 hours per day, 7 days per week.
<b>Facilities Affected</b>	TWY A South RWY 04/22 to TWY A1 TWY A1 TWY H TWY B	<b>TORA</b>	NOT AFFECTED
<b>Works Shift details</b>	Day Shift – 0600 to 1800 Monday to Friday, Saturdays by exception		
<b>Activities Undertaken</b>	<ul style="list-style-type: none"> <li>• Mill and Fill of Asphalt pavement within Taxiway A between Taxiway A1 and Runway 04/22</li> <li>• Mill and Fill of Taxiway H intersection with Taxiway A</li> <li>• Removal and replacement of affected AGL infrastructure within works area</li> <li>• Pavement Markings post completion of Asphalt works.</li> </ul>		
<b>Other Comments</b>	Affected assets closed for entire duration of Work Area construction period.		
<b>Restrictions to Manoeuvring Area</b>			
<b>Runways</b>	Not Applicable		
<b>Taxiways</b>	<ul style="list-style-type: none"> <li>• TWY A South RWY 04/22 to TWY A1 closed for duration of work stage.</li> <li>• TWY A1 closed for duration of work stage.</li> <li>• Taxiway H closed for duration of work stage.</li> <li>• Taxiway B closed during construction activities.</li> </ul>		
<b>Aprons</b>	Not Applicable		
<b>Aircraft type restrictions</b>	All aircraft affected		
<b>NOTAM</b>			
TWY A1, TWY B AND TWY H CLOSED TWY A SOUTH OF RWY 04/22 CLOSED  REFER METHOD OF WORKING PLAN YAMB 02/24 STAGE 1  CTC ATC OR WORKS SAFETY OFFICER C/S 'WORKS 20' ON COMMON TFC ADVISORY FREQ (CTAF) 118.3 OR TEL 0458 421 007			

## 2.1.2 Stage 2

<b>Dates</b>	18/06/2024 to 17/07/2024	<b>Timings</b>	24 hours per day, 7 days per week.
<b>Affected Area</b>	Runway 04/22 Taxiway A South of TWY J to TWY A1 TWY H TWY B	<b>TORA</b>	RWY 15/33: NOT AFFECTED RWY 04/22: CLOSED
<b>Works Shift details</b>	Day Shift – 0600 to 1800 Monday to Friday, Saturdays by exception		
<b>Activities Undertaken</b>	<ul style="list-style-type: none"> <li>• Mill and Fill of Asphalt pavement within Runway 04/22 and Taxiway A within Runway 04/22 strip</li> <li>• Removal and replacement of affected AGL infrastructure within works area</li> <li>• Installation of new MAG signs within existing locations within Taxiway A hold point to Runway 04/22</li> <li>• Installation of Tactical Landing Box Lighting and associated infrastructure on Runway 04/22</li> <li>• Installation of MAG and TACAN Signs, Taxiway C and D</li> <li>• Pavement Markings post completion of Asphalt works</li> <li>• Demolish Existing Road – Runway 04/22</li> </ul>		
<b>Other Comments</b>	Affected assets closed for entire duration of construction period.		
<b>Restrictions to Manoeuvring Area</b>			
<b>Runways</b>	<ul style="list-style-type: none"> <li>• Runway 04/22 Closed for duration of Work Stage</li> </ul>		
<b>Taxiways</b>	<ul style="list-style-type: none"> <li>• TWY A South of TWY J to TWY A1 closed for duration of work stage</li> <li>• TWY A1 closed for duration of work stage.</li> <li>• TWY B closed for duration of work stage.</li> <li>• TWY H closed for duration of work stage</li> </ul>		
<b>Aprons</b>	Not Applicable		
<b>Aircraft type restrictions</b>	All aircraft		
<b>NOTAM</b>			
<p>RWY 04/22 CLOSED            TWY A SOUTH OF TWY J CLOSED            TWY A1, TWY H AND TWY B CLOSED</p> <p>REFER METHOD OF WORKING PLAN YAMB 02/24 STAGE 2</p> <p>CTC ATC OR            WORKS SAFETY OFFICER C/S 'WORKS 20' ON COMMON TFC ADVISORY FREQ (CTAF) 118.3 OR            TEL 0458 421 007</p>			

### 2.1.3 Stage 3

<b>Planned dates</b>	18/07/2024 to 19/08/2024	<b>Timing</b>	24 hours per day, 7 days per week.
<b>Affected Area</b>	TWY A South TWY W2 to RWY 04/22 TWY Q (All) TWY J intersection with TWY A	<b>TORA</b>	NOT AFFECTED
<b>Works Shift details</b>	Day Shift – 0600 to 1800 Monday to Friday, Saturdays by exception		
<b>Activities Undertaken</b>	Mill and Fill of Asphalt pavement within Taxiway A between Taxiway Runway 04/22 and Taxiway W2 (Spartan Apron) Removal and replacement of affected AGL infrastructure within works area Reposition pit within shoulder of Taxiway Q Pavement Markings post completion of Asphalt works		
<b>Other Comments</b>	Affected assets closed for entire duration of construction period.		
<b>Restrictions: Manoeuvring Area</b>			
<b>Runways</b>	N/A		
<b>Taxiways</b>	TWY A South TWY W2 to RWY 04/22 closed for duration of work stage. TWY Q closed for duration of work stage. TWY W3 closed for duration of work stage. Intersection of TWY A and TWY J closed for duration of work stage.		
<b>Aprons</b>	Access to Spartan Apron Via Taxiway W1 and W2 only		
<b>Aircraft type restrictions</b>	Not Applicable		
<b>NOTAM</b>			
<p>TWY A BTN TWY W2 AND RWY 04/22 CLOSED TWY J, Q AND TWY W3 CLOSED</p> <p>REFER METHOD OF WORKING PLAN YAMB 02/24 STAGE 3</p> <p>CTC ATC OR WORKS SAFETY OFFICER C/S 'WORKS 20' ON COMMON TFC ADVISORY FREQ (CTAF) 118.3 OR TEL 0458 421 007</p>			

## **2.2 Notice to Airmen (NOTAM)**

*(Part 139 MOS – 15.01.6)*

RAAF Base Amberley BAEO, is responsible for requesting NOTAMs for each stage of the work.

The NOTAM text for each stage of work has been prepared by the contractor. Dates and times are indicative only and are to be confirmed 48 hours before submission of any NOTAM and the commencement of works.

Any proposed changes to the works detail are to be carried out in consultation with the relevant RAAF Base Amberley aerodrome stakeholders. Modification to the works information must be detailed in an amendment to this MOWP and the planned NOTAM text. All modifications must be reviewed and approved by the relevant authorities prior to the commencement of the works.

## **2.3 Impacts to Communication, Navigational, Surveillance (CNS) and Meteorological Facilities**

### **2.3.1 Instrument Landing System (ILS) Critical and Sensitive Areas**

ILS Sensitive Areas have been considered and are not impacted by these works.

### **2.3.2 Tactical Aircraft Navigation (TACAN)**

These works are not expected to impact serviceability of the TACAN.

## **2.4 Special Aerodrome Restrictions**

### **2.4.1 Ordnance Loading Areas (OLA)**

The following OLAs will be unavailable (by stage):

- Stage 1: OLA 5, 11 & 12
- Stage 2: OLA 1, 2, 4, 5, 11 & 12
- Stage 3: OLA 11 & 20

### **2.4.2 Aircraft Arresting Gear**

Aircraft arresting gear is not affected by these works.

### **2.4.3 Engine run-up procedures**

The works will impact availability of some engine run-up areas. Engine run-ups conducted on THR 04 must orient aircraft for a nose pointed towards THR 22.

Other engine run-up areas are not affected.

### **2.4.4 Alert Aprons and Operational Readiness Platforms (ORP)**

Alert Aprons and ORPs are not affected by these works.

### **2.4.5 Compass swing areas**

The Compass Swing Area on TWY J will be unavailable during Stage 3. Proximity of construction equipment during Stage 2 may impact accuracy of this site.



## **2.5 Special arrangements for emergencies**

*(Part 139 MOS – 16.03.7)*

Where time permits, ATC will advise the WSO the minimum time allowable to restore the movement areas to operational condition. The WSO will then advise ATC whether restoration of the movement areas is possible or not possible. ATC will advise the ABCP in such an event.

Under the direction of Air Traffic Control (ATC), the Works Safety Officer (WSO) is responsible for instructing the works organisation to vacate the work in the event of a declared emergency.

Outside ATC hours the WSO will contact the Amberley Duty Member (07 536 12888) and advise the status of the works area and the ability for it to be made available for declared aircraft emergencies. The WSO is to remain on CTAF to in order to communicate aerodrome restrictions where relevant.

### **2.5.1 Aircraft Emergencies**

Emergency procedures at the aerodrome have been considered and are not impacted by these works. All emergency response procedures listed in the Aerodrome Manual and associated Aerodrome Emergency Plan remain extant.

On the declaration of an aircraft emergency, the WSO is to contact ATC seeking direction to remain within the works area or vacate at the closest, safest aerodrome gate. The WSO is responsible for instructing the works contractor to vacate the works area in the event of a declared emergency. If required to vacate is given, personnel are to vacate under the direction of the WSO. Equipment may remain within the confines of the works area.

The WSO will communicate the status of the works area and the ability for it to be made available for declared aircraft emergencies over CTAF.

Restrictions to Aircraft Operations (RTAO) will remain in place for the current stage of works. Restoration of the works area to a serviceable condition will not be achieved within the timeframe of declared aircraft emergencies.

### **2.5.2 Provisions for Aviation Rescue and Fire Fighting (ARFF) Services**

ARFF vehicles are permitted to enter and cross closed movements areas if providing emergency response services. ATC should, in the first instance, route ARFF in a way that avoids active works areas if possible.

The WSO will assist ARFF in accessing the works area where necessary.

When responding to an incident near (within 25m proximity of works limits markers) or within an active works area, ARFF vehicles are not to exceed 40 km/h.

## **2.6 Adverse Weather and Low Visibility Operations**

*(Part 139 MOS – 16.03.7)*

All stages could be adversely affected by wet weather and may result in temporary stoppages of the works.

IAW Amberley Aerodrome Manual, Chapter 24, Low visibility procedures (LVP) are required when the visual meteorological condition (VMC) has degraded to a distance that aerodrome surface movement safety may be compromised.

For works undertaken within this MOWP, the requirement to minimise traffic during low visibility operations is waived.

Works carried out during periods where Low Visibility Operations are declared by Amberley Tower Supervisor, the works contractor are to proceed with the approval of the Tower Supervisor.

Where CTAF procedures apply, the WSO is responsible for declaring low visibility operations. Works are to proceed with the approval of the BAEO. The Works Manager is responsible for seeking these approvals.

Stages will be delayed from commencement if the area is wet or likely to be wet. The works contractor have developed a decision flow chart for the decision making process for inclement weather. This is provided within Appendix C.

### 3 Restrictions to the Works Contractor

(Part 139 MOS – 16.03.8b)

#### 3.1 General

The WSO has absolute authority to direct the Works Contractor on airfield operational requirements.

Works will be confined to the areas shown at Appendix B.

The WSO is to advise the BAEO and/or BASO when the works area is expected to be suitable for aircraft operations, to enable an independent inspection where possible.

#### 3.2 Personnel

All personnel associated with the work are bound by any instructions issued by the WSO, who has the right to refuse access to persons likely, in his/her opinion, to compromise aircraft safety on the airfield.

Any breaches of aviation safety (not detected by the WSO) must be reported to the WSO. The WSO is to initiate an immediate response in consultation with the BASO. The BASO will prepare and submit an Aviation Safety Report (ASR) if required.

Smoking or vaping is not permitted on the airside movement area.

#### 3.3 Vehicles and Plant

The item of plant and equipment being utilised for these works is 8 metres in height and will be used in the vicinity of all runways and taxiways. Should aircraft operations be undertaken above the work areas, Fulton Hogan will reduce the height of the light towers during these operations under consultation with the WSO.

Machine	Max Working Height	Zones
Profiling Machine (on transport Float only)	6m	All Applicable.
Lighting Tower	8m	
Bitumen Spray Truck	5m	
Material Transfer Vehicle (MTV)	5m	

No movement of vehicles or plant is to take place outside the works areas or access routes without the consent of the WSO. Only vehicles and plant engaged in the work activities shall be permitted at the work site. Private vehicles will not be permitted at the airside work site.

At the end of each work period, all vehicles, plant, equipment and material are to be moved clear of the works area and parked in the designated parking area, shown at Appendix B.

Vehicles and self-propelled items of plant are to have vehicle warning lights as detailed in CASR MoS Part 139 Section 14.05: Other Lights on an Aerodrome whenever they are operating within the airside movement area.

The refuelling of any vehicles or equipment must occur within the equipment mustering area. The Works Contractor is responsible implementing spill management controls and for the notification of any fuel spills to the BAEO, through the Works Manager.

All vehicles are to be cleaned and inspected IAW the P0010 Construction Environmental management Plan (CEMP) and approved Environmental Clearance Certificate (ECC).

### **3.4 Foreign Object Debris (FOD) Control**

The Works Contractor is to ensure that aircraft pavements used or crossed during the works are kept clean and free of debris. Any debris is to be immediately removed by the Works Contractor to the satisfaction of the WSO.

All loose material and equipment must be secured against movement in strong winds or aircraft blast. Measures shall be taken at all times for control of dust or other nuisance materials and the Works Contractor shall immediately respond to any direction by the WSO, BAEO, BASO or Amberley Site Manager to eliminate any problem. The Works Contractor is responsible for implementing appropriate control measures.

On completion of each work period where airfield movement areas are required to be returned to active use, the Works Supervisor is to ensure the works area is made serviceable, including the removal of all FOD hazards, to the satisfaction of the WSO.

### **3.5 Works Permits**

To prevent damage to airport lighting systems and other airport facilities the Works Contractor must obtain dig permits from the local EMOS Project Support Officer, Stephen Joseph; contact via Stephen.joseph@spotless.com.au, prior to undertaking any excavation on the site.

All works are to be undertaken in accordance with the P0010 Construction Environmental Management Plan (CEMP) and approved Environmental Clearance Certificate (ECC).

#### **3.5.1 Protection of Electrical Services**

The Contractor must confirm the location of all underground services within the vicinity of the works to be undertaken. Any works on or near electrical cables must be referred to EMOS a minimum of 48 hours prior to commencement of works to arrange all necessary isolations or temporary connections.

The contractor must not undertake mechanical excavations within 2m of gas mains and 3m of HV cables. Only Vacuum excavation Trucks, and hand excavations are to be undertaken within known locations of services. Prior to excavations, the contractor will manually locate all known services provided within the *for construction* drawings.

For any isolations required, the Contractor will contact the PMCA to organise electrical isolations via the EMOS contractor for RAAF Amberley.

### **3.6 Access to the Works and Security**

Access to the works area is to be via the designated route shown at Appendix B. Movement of vehicles, plant and equipment must be confined to these routes.

All personnel are to have completed a RAAF Amberley Base Induction including airside awareness within the past 12 months. If this has not happened, they are trespassing and liable for prosecution.

Personnel are only permitted to move about the designated work areas, and only using the designated access routes. Any person detected on the site outside these limits may be evicted from the site and denied return.

## **3.7 Special Requirements**

### **3.7.1 Environmental**

Environmental impacts have been assessed with controls documented within the Fulton Hogan P0010 Construction Environmental Management Plan (CEMP), approved Environmental Clearance Certificate (ECC) and the RAAF Base Amberley Wildlife Hazard Management Plan.

Prior to performing any hot work, the Works Contractor Works Supervisor is to obtain a Hot Work Permit, which can be facilitated through SEG.

Contaminated material, excavated as a result of the works, must be removed from site.

Personal protective equipment (PPE), including hearing protection, is to be worn at all times.

### **3.7.2 Aerodrome Serviceability**

Any damage to aerodrome facilities or property must be reported immediately to the Works Safety Officer and the Airside Operations Officer.

The WSO is to advise the BEAO immediately of any changes to the airfields serviceability caused or identified by the project.

### **3.7.3 Other Restrictions**

Works are not to commence until the WSO has, on the day of the works, confirmed that the correct NOTAM is current for the planned works. The WSO is also to be in possession of hard copy of the published NOTAMs relevant to their area of works.

All loose material and equipment must be secured against movement in strong winds or aircraft propeller wash or jet blast.

Vehicle light fittings should be checked to ensure that the lights are not directed unduly upwards and portable lights should be shielded as required. Vehicle high beams are not to be used.

Personnel and equipment may need to partially withdraw from a work area to avoid propeller wash or jet blast from a departing or passing aircraft. The Works Safety Officer will direct the Works Contractor to vacate to a safe working distance before aircraft movement.

## **4 Aerodrome markers, markings and lights**

*(Part 139 MOS – 16.03.8b)*

Markings, markers and lighting are not to be installed, altered or removed without the approval of the WSO or BASO/BAEO. The WSO is to ensure that all markers are established and removed at the start and end of each work period, as detailed in the relevant NOTAM. Further, the WSO is to ensure that the markers are appropriate and maintained at all times during the works until the area is returned to normal conditions.

### **4.1 Visual aids provided by markers**

All visual ground aids are to be protected from sprayed bitumen by appropriate covering prior to the commencement of the work and uncovering after completion of the work.

#### **4.1.1 Unserviceability markers**

Closed portions of the manoeuvring area will be marked by red and white unserviceability markers (refer to CASA Part 139 MOS Section 8.108) during the day, and red lights at night.

#### **4.1.2 Works Limit markers**

The limit of works is marked with Works limit markers – non-reflective orange witches' hats (and orange lights at night). The installation of the Works Limits markers is the responsibility of the Works Contractor. All personnel (and equipment) must remain within the designated works area, unless accompanied by a WSO.

#### **4.1.3 Runway or Runway Strip markers**

Runway strip markers on Runway 04/22 will remain in-situ for the duration of the works.

Some Movement Area Guidance Signs (MAGS) will be replaced during the delivery of these works.

### **4.2 Visual aids provided by markings**

#### **4.2.1 Runway markings**

Runway markings will be reinstated by the contractor prior to the completion of the programed stage of works.

#### **4.2.2 Taxiway markings**

Taxiway markings will be reinstated by the contractor prior to the completion of the programed stage of works.

#### **4.2.3 Apron markings**

Apron markings are not affected by these works.

#### **4.2.4 Other aerodrome markings**

Other aerodrome markings are not affected by these works.

## **4.3 Visual aids provided by lighting**

All lighting within and directly leading into the closed portion of the manoeuvring area will be obscured or extinguished by the Works Contractor as instructed by the WSO. The contractor will ensure any temporary runway or taxiway lighting associated with the works are not obscured or moved.

### **4.3.1 Runway lighting**

Runway edge and threshold lighting will be extinguished where appropriate.

### **4.3.2 Taxiway lighting**

Taxiway lighting will be extinguished where appropriate.

### **4.3.3 Apron lighting**

Apron centreline and edge lighting will be extinguished where appropriate.

### **4.3.4 Other aerodrome lighting systems**

No other lighting systems will be affected by these works.

Works limit lights will be provided to indicate to persons associated with the works the limit of the works area. Works limit lights must be portable, amber/orange lights of a standard type commercially available as works warning lights and shall be positioned so to not dazzle or cause confusion to pilots.

.

## **5 Administration**

*(Part 139 MOS – 15.04)*

### **5.1 Project Manager**

The PMCA for P0010 is Mr Pete Muir [not on site].

The PMCA may be contacted on the following numbers:

Mobile: +61 401 348 371

Email: [pete.muir@beca.com](mailto:pete.muir@beca.com)

### **5.2 Design Consultant (DC)**

The Design Consultant for P0010 is GHD.

The DC Consultant's Representative for P0010 is David Ellis [not on site]. The DC's on-site Representative's contact details are at Para 5.7. The DC's representative may be contacted on the following numbers:

Name: Adam Marr

Mobile: 0427 184 806

Email: [adam.marr@ghd.com](mailto:adam.marr@ghd.com)

### **5.3 Works Contractor**

The Contractor's Representative/Project Manager will be Danny Keough (Mobile: 0428 002 406)

The Contractor's Works Manager will be Kawsher Alam (Mobile: 0498 935 351)

The Fulton Hogan duty number will be Danny Keough (Mobile: 0428 002 406)

The Contractor's Works Manager or their delegate must be present on site during all work periods and is responsible for complying with the requirements of this MOWP.

All contact, with the Base, by the Contractor, in relation to the work, is to be made through the SEG Project Officer or delegate.

### **5.4 Works Safety Officer**

The nominated Works Safety Officers (WSO) for these works will be from Airport Consultancy Group (ACG). The WSO contact details are at Para 5.7.

The WSO duty phone number is 0458 421 007.

The WSO will be present on site at all times while work is in progress.

The WSO is responsible for carrying out WSO duties in accordance with the requirements as stipulated in CASR MoS Part 139 2020 Sections 10.10 – Aerodrome Works Safety, 10.12 – Functions of a Works Safety Officer, and this MOWP.

If there are multiple works sites, a WSO must be appointed to each work site to ensure that a WSO is present at all times as per CASR Mos Part 139 2020, Section 10.12.



The WSO must maintain radio communications with Amberley Ground on 121.925 MHz when ATC is active, or maintain radio communications on the CTAF 118.300 MHz when the aerodrome is Non-towered.

The WSO must have a copy of this MOWP accessible at all times.

For Nights Works:

- Ensure that the works are completed (which includes completion of the inspection confirming serviceability of works areas and the movement area access routes) and the lighting reinstated by the NOTAM finish time.
- Should night works be completed early, the airfield will remain closed and the lighting reinstated by the NOTAM finish time (unless special arrangements to make the airfield available earlier are agreed by relevant parties).

The WSO is responsible for Aviation Safety matters affecting the works site. Any breaches of aviation standards are to be reported to BASO or delegate for reporting and investigation.

## **5.5 Base Aviation Safety Officer (BASO)**

The Base Aviation Safety Officer (BASO) will provide airside induction training to the personnel involved in carrying out any works on the manoeuvring areas, including competency check of WSOs involved in these works.

The BASO will be the main point of contact for any aviation safety issues during the Works.

The Base Aviation Safety Officer for the works will be FLTLT Peter Simms.

## **5.6 Base Aerodrome Engineering Officer (BAEO)**

The BAEO will be available for inspections of movement areas prior to reopening for operations with a notice period of 24 hours. All works milestones must be reported and inspected by the BAEO where applicable.

## 5.7 Contact Details

Contact details for various persons and agencies involved in the works either directly or indirectly are listed below.

<b>23 SQN</b>		
Commanding Officer (CO) 23SQN	WGCDR Tanya Evans	Tel: 02 5130 2711 Mob: 0427 925 235
Operations Flight Commander 23SQN	SQNLDR Anthony Wood	Tel: 02 5108 6743
Base Aerodrome Engineering Officer (BAEO)	FLTLT Blake Fumberger	Tel: 07 5362 5914 Mob: 0458 611 197
Deputy Base Aerodrome Engineering Officer (DBAEO)	FSGT Mathew Coubrough	Tel: 07 4430 0825 Mob: 0409 301 101
Base Aviation Safety Officer (BASO)	FLTLT Peter Simms	Tel: 07 4430 0095 Mob: 0477 322 081
23SQN Operations Officer (BOPSO/PLANSO)	FLTLT Jacob Auston	Tel: 08 7374 3907 Mob: 0429 431 861
	WOFF Mark Garbutt	Tel: 07 5362 3072 Mob: 0439 479 575
<b>452 SQN DET AMB (ATC)</b>		
RAAF Amberley Control Tower	Tower Supervisor	Tel: 07 536 13346
452SQN AMB FLT CDR	SQNLDR Mark Bignell	Tel: 02 4449 3610 Mob: 0412 838 311
452SQN AMB FLT OPS CDR	SQNLDR Ryan Higgo	Tel: 08 6570 1722 Mob: 0433 383 822
<b>SEG – AMB</b>		
Base Manager	Miss Sarah Benson	Tel: 07 5362 9099
Base Infrastructure Advisor (BIA)	WGCDR Alistair Third	Tel: 02 4077 8672
EMOS Project Support	Stephen Joseph	E: <a href="mailto:stephen.joseph@defence.gov.au">stephen.joseph@defence.gov.au</a>
<b>Contract Administrator –Beca</b>		
PMCA Representative	Pete Muir	Mob: 0401 348 371
Project Manager	Lindsay Murray	Mob: 0404 135 339
<b>Designer – GHD</b>		
Contractors Rep	David Ellis	Tel: 08 8111 6540 Mob: 0407 306 535
Project Manager	Colm O'Sheehan	Tel: 08 8111 6589 Mob: 0468 951 609
Site Representative	Adam Marr	Tel: 07 3316 3384 Mob: 0427 184 806
<b>Works Contractor – Fulton Hogan</b>		
Contractors Representative/Project Manager	Danny Keough	Mob: 0428 002 406
Project Manager	Kawsher Alam	Mob: 0498 935 351
<b>Works Safety Officer</b>		
Works Safety Officer	Michael Sternbeck	Mob: 0458 421 007
Works Safety Officer	Cade Jones	Mob: 0458 421 007
Works Safety Officer	Zac Anderson	Mob: 0402 578 388
Works Safety Officer	John Purnell-Webb	Mob: 0432 915 919

## Appendix A. Distribution List

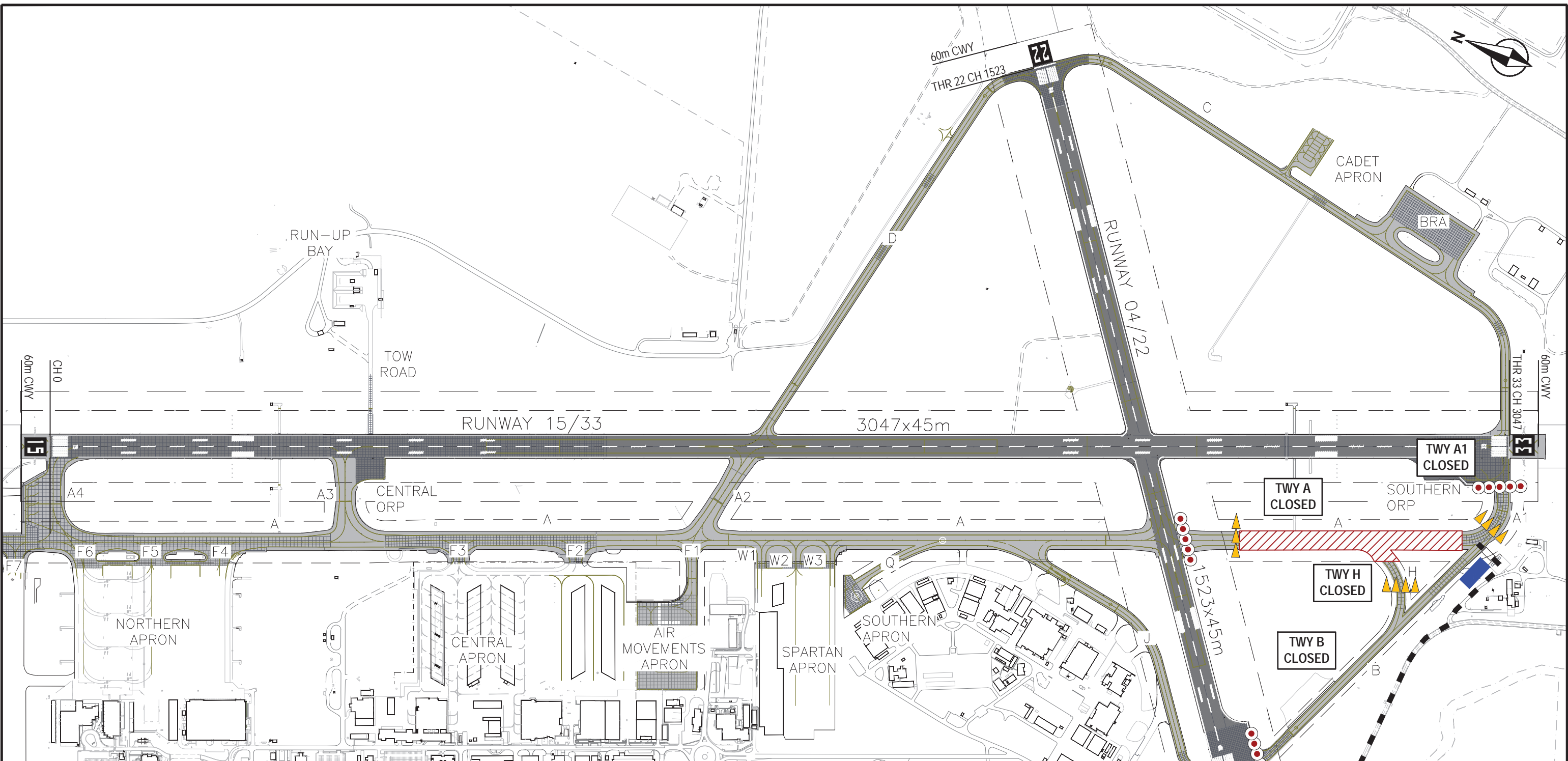
### (Part 139 MOS – 16.10)

This MOWP is to be distributed to all of the persons and agencies listed in the Contact Details listed below.

AIS-AF OPS	VBM AIS	<a href="mailto:vbmais.operations@defence.gov.au">vbmais.operations@defence.gov.au</a>
AMCC OPS	AMCC	<a href="mailto:AMCC.OPS@defence.gov.au">AMCC.OPS@defence.gov.au</a>
AMCC Plans	AMCC	<a href="mailto:Amcc.plans@defence.gov.au">Amcc.plans@defence.gov.au</a>
Current OPS	CSD	<a href="mailto:ambcsd-a.currentops@defence.gov.au">ambcsd-a.currentops@defence.gov.au</a>
82WG OPS	82WG	<a href="mailto:amb82wg.ops@defence.gov.au">amb82wg.ops@defence.gov.au</a>
86WG XO	86WG	<a href="mailto:ambhq86wg.orderlyroom@defence.gov.au">ambhq86wg.orderlyroom@defence.gov.au</a>
86WG Force Generation	86WG	<a href="mailto:ambhq86wg.forcegeneration@drn.mil.au">ambhq86wg.forcegeneration@drn.mil.au</a>
96WG Airbase Systems	96WG	<a href="mailto:amb.hq96wg.airbase.systems@defence.gov.au">amb.hq96wg.airbase.systems@defence.gov.au</a>
96WG Wing Aviation Safety	96WG	<a href="mailto:ambhq96wgwaso@resources.defence.gov.au">ambhq96wgwaso@resources.defence.gov.au</a>
BM	SEG-AMB	<a href="mailto:basemanagement.raafamberley@defence.gov.au">basemanagement.raafamberley@defence.gov.au</a>
CO 23 SQN	23SQN	<a href="mailto:tanya.evans@defence.gov.au">tanya.evans@defence.gov.au</a>
23SQN Cable Party	23SQN	<a href="mailto:amb23sqncableparty@resources.defence.gov.au">amb23sqncableparty@resources.defence.gov.au</a>
ABCP PLANS	23SQN	<a href="mailto:amb.plans@defence.gov.au">amb.plans@defence.gov.au</a>
ABCP Watchkeeper	23SQN	<a href="mailto:Amb.abcp@defence.gov.au">Amb.abcp@defence.gov.au</a>
BAEO	23SQN	<a href="mailto:Amb.baeo@defence.gov.au">Amb.baeo@defence.gov.au</a>
BAM	23SQN	<a href="mailto:Amb.BAM@defence.gov.au">Amb.BAM@defence.gov.au</a>
BASO	23SQN	<a href="mailto:Amb.basos@defence.gov.au">Amb.basos@defence.gov.au</a>
BOPSO	23SQN	<a href="mailto:amb.bopso@defence.gov.au">amb.bopso@defence.gov.au</a>
BSECO	23SQN	<a href="mailto:Amb23sqnsecfltsncos@dpe.protected.mil.au">Amb23sqnsecfltsncos@dpe.protected.mil.au</a>
Fire Watchroom	23SQN	<a href="mailto:AMBFire.Watchroom@defence.gov.au">AMBFire.Watchroom@defence.gov.au</a>
		<a href="mailto:amb.23sqnfiretrmgr@defence.gov.au">amb.23sqnfiretrmgr@defence.gov.au</a>
1SQN OPS	1SQN	<a href="mailto:amb.1sqnops@defence.gov.au">amb.1sqnops@defence.gov.au</a>
6SQN OPS	6SQN	<a href="mailto:amb.6sqnops@defence.gov.au">amb.6sqnops@defence.gov.au</a>
33SQN OPS	33SQN	<a href="mailto:amb33sqn.ops@defence.gov.au">amb33sqn.ops@defence.gov.au</a>
33SQN PLANS	33SQN	<a href="mailto:amb33sqn.plans@defence.gov.au">amb33sqn.plans@defence.gov.au</a>
35SQN OPS	35SQN	<a href="mailto:amb35sqn.operations@defence.gov.au">amb35sqn.operations@defence.gov.au</a>
36SQN OPS	36SQN	<a href="mailto:36sqn.ops@defence.gov.au">36sqn.ops@defence.gov.au</a>
452SQN AMB TWR	452SQN	<a href="mailto:452sqnamb.twrspr@defence.gov.au">452sqnamb.twrspr@defence.gov.au</a>
452SQN AMB OPS CDR	452SQN	<a href="mailto:452sqnamb.opscdr@defence.gov.au">452sqnamb.opscdr@defence.gov.au</a>
Boeing Defence Australia	BDA	<a href="mailto:BDAAMBSitePlanning@exchange.boeing.com">BDAAMBSitePlanning@exchange.boeing.com</a>
		<a href="mailto:catalina.i.garciagomez@boeing.com">catalina.i.garciagomez@boeing.com</a>
AAFC EFTS	208SQN	<a href="mailto:208SQN@airforcecadets.gov.au">208SQN@airforcecadets.gov.au</a>
		<a href="mailto:joevine@mail.com">joevine@mail.com</a>
Amberley SAR Flight CHC	CHC	<a href="mailto:amberley-ops@chcheli.com">amberley-ops@chcheli.com</a>
Amberley Flying Club	RAFC	<a href="mailto:rafctraining@gmail.com">rafctraining@gmail.com</a>
PMCA	<i>Beca</i>	<a href="mailto:Pete.Muir@beca.com">Pete.Muir@beca.com</a>
PMCA Onsite Manager	<i>BECA</i>	<a href="mailto:lindsay.murray@beca.com">lindsay.murray@beca.com</a>
DSC Project Manager	<i>GHD</i>	<a href="mailto:Colm.OSheehan@ghd.com">Colm.OSheehan@ghd.com</a>
DSC Onsite Representative	<i>GHD</i>	<a href="mailto:mike.diviwelagi@ghd.com">mike.diviwelagi@ghd.com</a>
Project Manager	Fulton Hogan	<a href="mailto:Danny.Keough@fultonhogan.com.au">Danny.Keough@fultonhogan.com.au</a>
Contracts Works Manager	Fulton Hogan	<a href="mailto:Kawsher.Alam@fultonhogan.com.au">Kawsher.Alam@fultonhogan.com.au</a>
Works Safety Officer	ACG	<a href="mailto:madana108@yahoo.com">madana108@yahoo.com</a>
Works Safety Officer	ACG	<a href="mailto:info@aeroco.au">info@aeroco.au</a>

# Appendix B. Drawings

THIS PAGE HAS BEEN INTENTIONALLY LEFT BLANK



**LEGEND:**

- WORKS AREA
- PLANT LAYDOWN AREA
- RUNWAY CLOSED (36m CROSS)
- U/S CONES AND RED LIGHTS
- WITCHES HATS / WORKS LIMIT
- DISPLACED THRESHOLD & GREEN LIGHTS
- VEHICLE ACCESS ROUTE

**ABBREVIATIONS / ACRONYMS:**

APP	APPROACH
CWY	CLEARWAY
TWY	TAXIWAY
RWY	RUNWAY
RWE	RUNWAY END
SOT	START OF TAKEOFF
THR	THRESHOLD
TKOF	TAKEOFF
TORA	TAKE-OFF RUN AVAILABLE
TODA	TAKE-OFF DISTANCE AVAILABLE
ASDA	ACCELERATE STOP DISTANCE AVAILABLE
LDA	LANDING DISTANCE AVAILABLE

**NOTES:**

1. WORKS TO BE CARRIED OUT IN ACCORDANCE WITH RAAF BASE AMBERLEY MOWP.
2. ACCESS TO WORKS AREA BY RAAF BASE AMBERLEY APPROVED VEHICLE ROUTE.
3. RWY DISPLACEMENT STODAs HAVE BEEN CALCULATED USING THE ERSA-RDS RWY SLOPE INFORMATION.
4. CONES AND MARKERS ARE SHOWN DIAGRAMMATICALLY. SETOUT MUST BE IN ACCORDANCE WITH PART 139 - AERODROMES MOS CHAPTER 8.

A 22.04.24 PRELIMINARY ISSUE

WORKS CONTRACTOR:  
**Fulton Hogan**  
 AVIATION CONSULTANT:  
**Airworks**

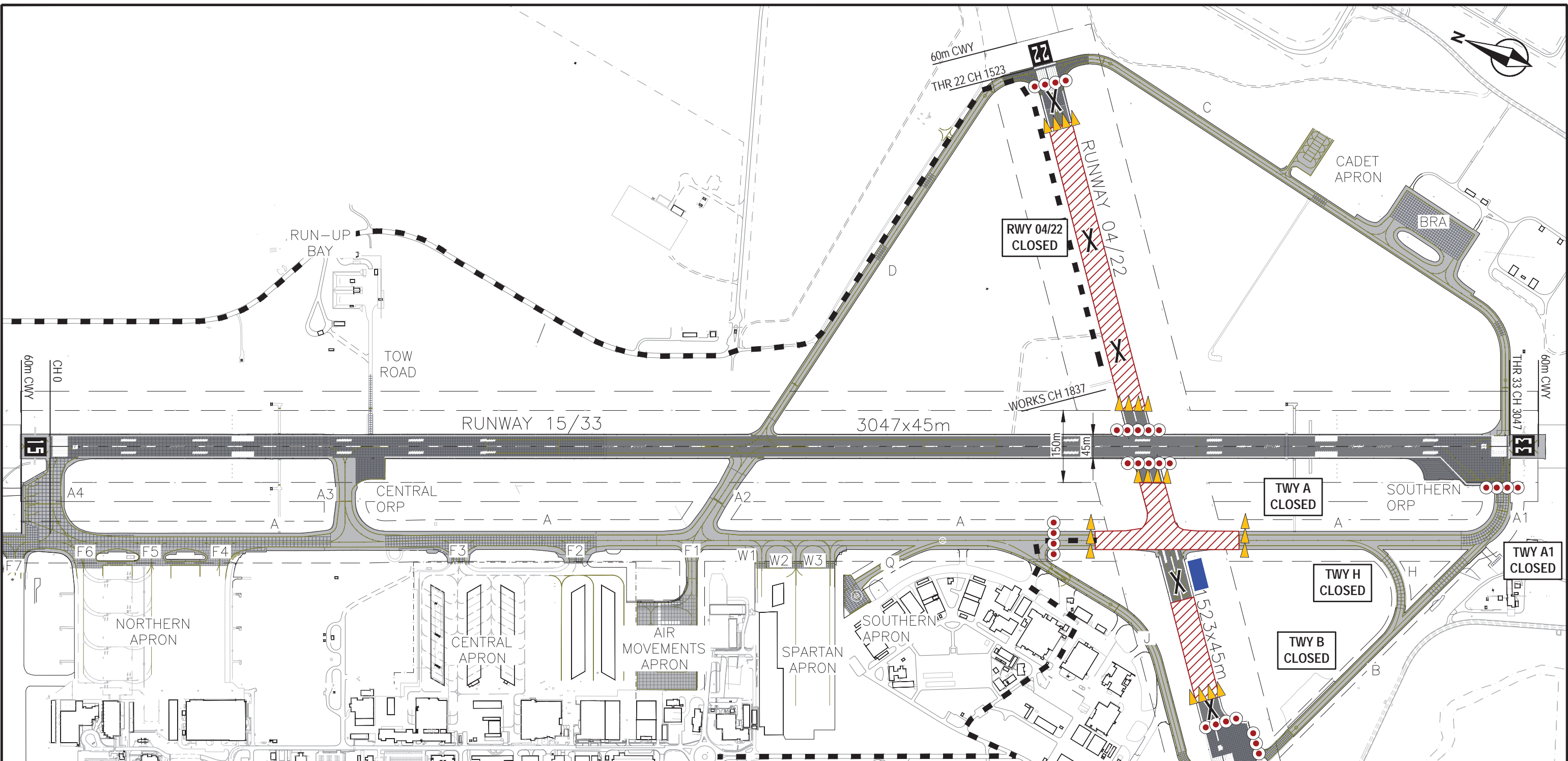
**RAAF BASE  
AMBERLEY, QLD**

**MOWP:  
YAMB 24/01**

**P0010 - NATIONAL AIRFIELD WORKS  
TWY A CLOSED  
STAGE 1**

**YAMB2401-01 | A**  
 DRAWING No. REV  
 40 0 40 80 120 160m  
 A1 SCALE 1:4000





**LEGEND:**

- WORKS AREA
- PLANT LAYDOWN AREA
- RUNWAY CLOSED (36m CROSS)
- U/S CONES AND RED LIGHTS
- WITCHES HATS / WORKS LIMIT
- DISPLACED THRESHOLD & GREEN LIGHTS
- VEHICLE ACCESS ROUTE

**ABBREVIATIONS / ACRONYMS:**

APP	APPROACH
CWY	CLEARWAY
TWY	TAXIWAY
RWY	RUNWAY
RWE	RUNWAY END
SOT	START OF TAKEOFF
THR	THRESHOLD
TKOF	TAKEOFF
TORA	TAKE-OFF RUN AVAILABLE
TODA	TAKE-OFF DISTANCE AVAILABLE
ASDA	ACCELERATE STOP DISTANCE AVAILABLE
LDA	LANDING DISTANCE AVAILABLE

**NOTES:**

1. WORKS TO BE CARRIED OUT IN ACCORDANCE WITH RAAF BASE AMBERLEY MOWP.
2. ACCESS TO WORKS AREA BY RAAF BASE AMBERLEY APPROVED VEHICLE ROUTE.
3. RWY DISPLACEMENT STODAs HAVE BEEN CALCULATED USING THE ERSA-RDS RWY SLOPE INFORMATION.
4. CONES AND MARKERS ARE SHOWN DIAGRAMMATICALLY. SETOUT MUST BE IN ACCORDANCE WITH PART 139 - AERODROMES MOS CHAPTER 8.

A1 Border  
A 22.04.24 PRELIMINARY ISSUE

REV	DATE	DETAILS

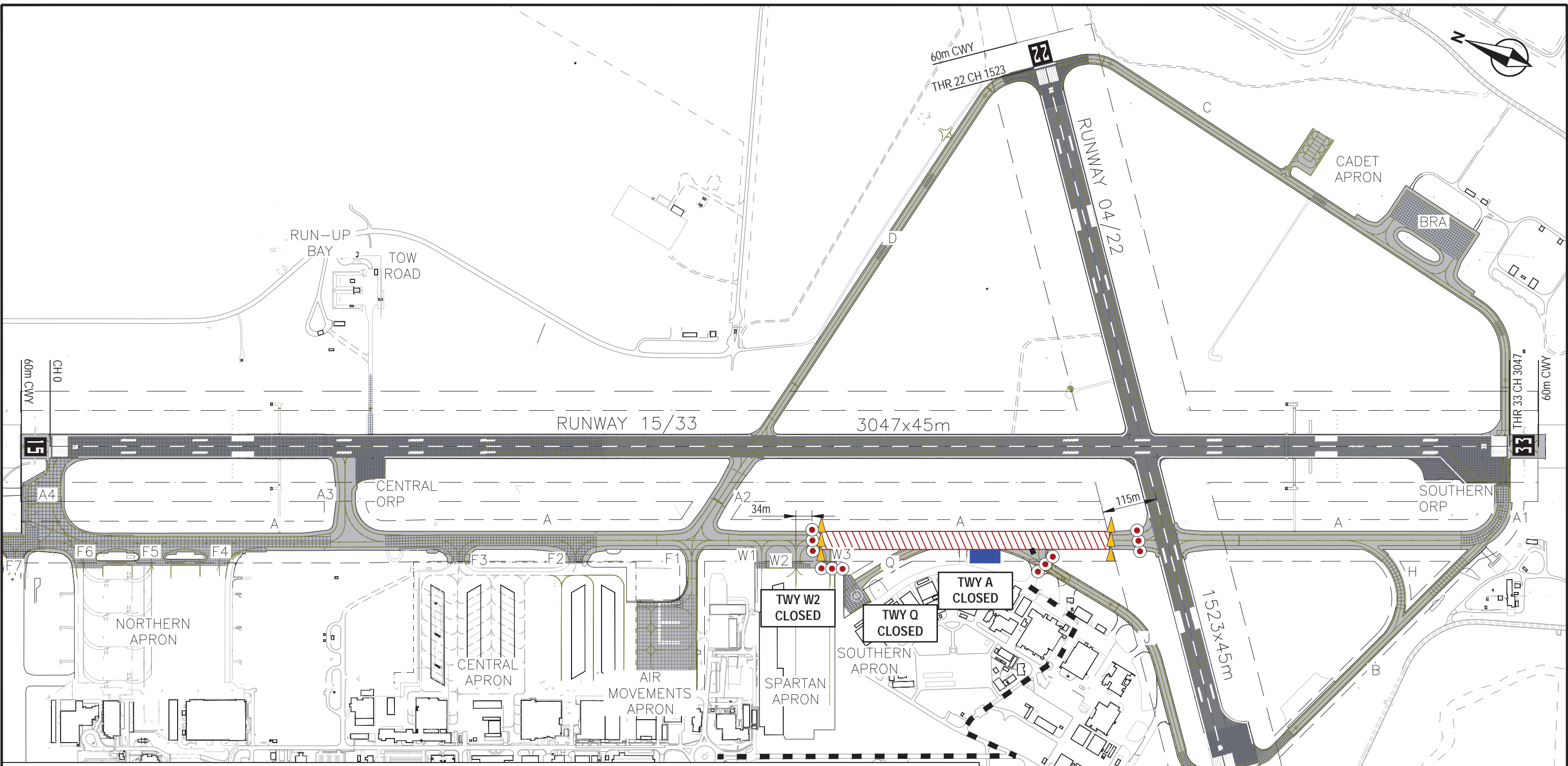
WORKS CONTRACTOR:  
**Fulton Hogan**  
 AVIATION CONSULTANT:  
**Airworks**

**RAAF BASE  
AMBERLEY, QLD**

**MOWP:  
YAMB 24/01**

**P0010 - NATIONAL AIRFIELD WORKS  
RWY 04/22 & TWY A CLOSED  
STAGE 2**

**YAMB2401-02 | A**  
 DRAWING No. REV  
 40 0 40 80 120 160m  
 A1 SCALE 1:4000



**LEGEND:**

- WORKS AREA
- PLANT LAYDOWN AREA
- RUNWAY CLOSED (36m CROSS)
- U/S CONES AND RED LIGHTS
- WITCHES HATS / WORKS LIMIT
- DISPLACED THRESHOLD & GREEN LIGHTS
- VEHICLE ACCESS ROUTE

**ABBREVIATIONS / ACRONYMS:**

APP	APPROACH
CWY	CLEARWAY
TWY	TAXIWAY
RWY	RUNWAY
RWE	RUNWAY END
SOT	START OF TAKEOFF
THR	THRESHOLD
TKOF	TAKEOFF
TORA	TAKE-OFF RUN AVAILABLE
TODA	TAKE-OFF DISTANCE AVAILABLE
ASDA	ACCELERATE STOP DISTANCE AVAILABLE
LDA	LANDING DISTANCE AVAILABLE

**NOTES:**

1. WORKS TO BE CARRIED OUT IN ACCORDANCE WITH RAAF BASE AMBERLEY MOWP.
2. ACCESS TO WORKS AREA BY RAAF BASE AMBERLEY APPROVED VEHICLE ROUTE.
3. RWY DISPLACEMENT STODAs HAVE BEEN CALCULATED USING THE ERSA-RDS RWY SLOPE INFORMATION.
4. CONES AND MARKERS ARE SHOWN DIAGRAMMATICALLY. SETOUT MUST BE IN ACCORDANCE WITH PART 139 - AERODROMES MOS CHAPTER 8.

A1 Border  
A 22.04.24 PRELIMINARY ISSUE  
REV DATE DETAILS

WORKS CONTRACTOR:  
**Fulton Hogan**  
 AVIATION CONSULTANT:  
**Airworks**

**RAAF BASE  
AMBERLEY, QLD**

**MOWP:  
YAMB 24/01**

**P0010 - NATIONAL AIRFIELD WORKS  
TWY A, Q & J INTERSECTION CLOSED  
STAGE 3**

**YAMB2401-03 | A**  
 DRAWING No. REV  
 40 0 40 80 120 160m  
 A1 SCALE 1:4000

# Appendix C. Inclement Weather Decision Flow Chart

THIS PAGE HAS BEEN INTENTIONALLY LEFT BLANK



The following flowchart outlines the decision-making process for either continuing or cancelling a shift based on inclement weather factors.

