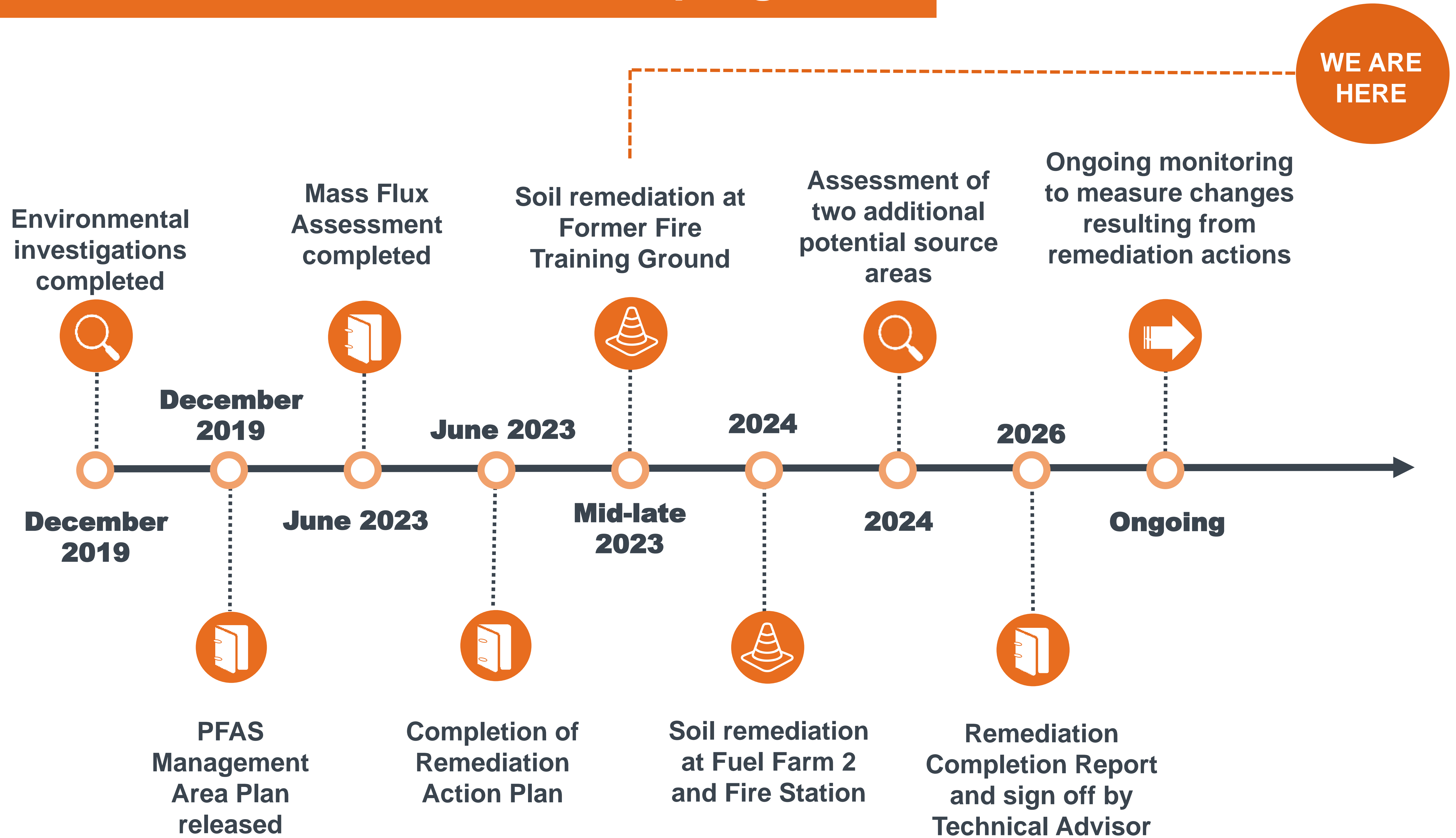




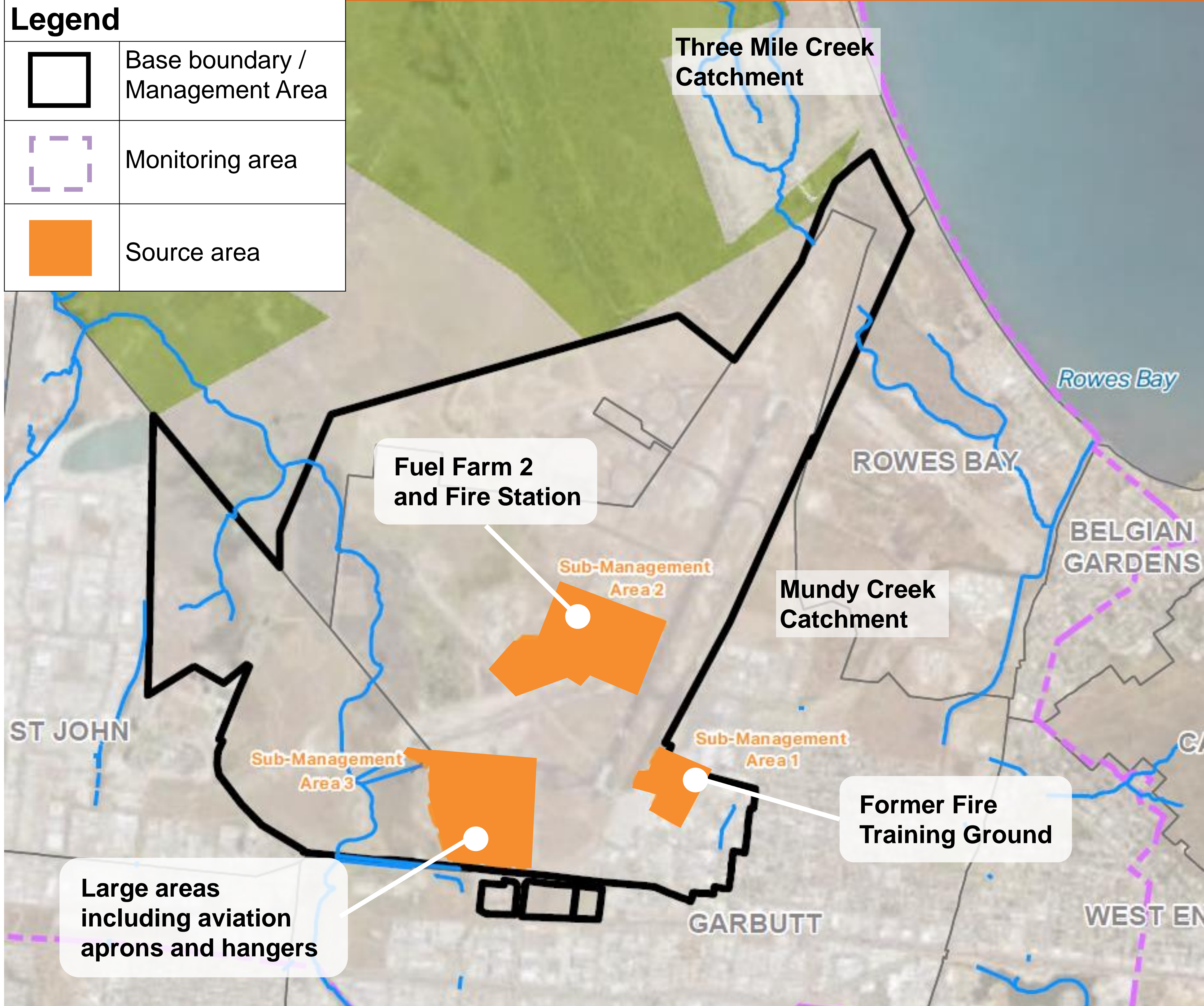
RAAF Base Townsville timeline of program





RAAF Base Townsville Management Area and source areas

Legend	
	Base boundary / Management Area
	Monitoring area
	Source area



Source areas

- PFAS source areas are found where firefighting foam was previously used, stored or disposed of.
- Three PFAS source areas were identified at RAAF Base Townsville in December 2019.
- Two potential PFAS source areas were identified in the June 2023 Mass Flux Assessment. These areas will be investigated further to determine if remediation actions are required.
- PFAS is transported off-base through groundwater and surface water (drains and creeks).
- Surface water monitoring focusses on three catchments: Bohle River/Louisa Creek/Town Common, Three Mile Creek and Mundy Creek.



RAAF Base Townsville - Soil remediation at the Former Fire Training Ground



7500 m³ of soil excavated for treatment, or destruction off base.

Action

Drainage remediation, soil compaction and 'guard trenches' reducing PFAS migration

Outcome

PFAS migration from this source area reduced to the extent practicable.

Soil stabilisation prevents PFAS from moving, and is:

- ✓ a suitable treatment for moderate to low level PFAS contaminated soil
- ✓ a more sustainable option.

Contaminated soils with very high concentrations of PFAS were:

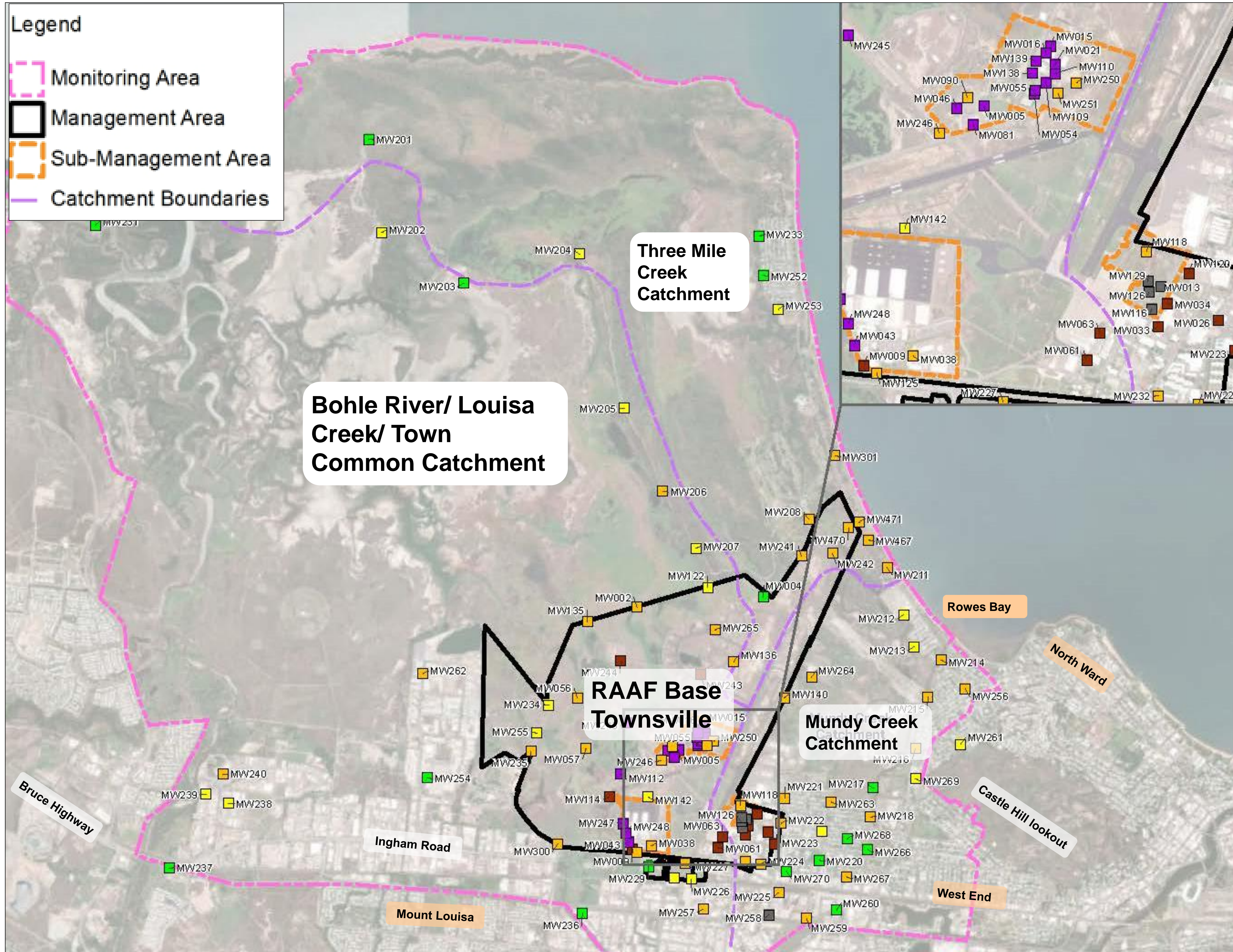
- ✓ removed from the base
- ✓ destroyed at a licensed facility in Victoria by a high temperature treatment process.

Drainage remediation, soil compaction and guard trenches:

- ✓ reduce rain water infiltration and PFAS migration from the soil into the drainage system and surrounding environment.



RAAF Base Townsville – Recent ongoing monitoring sampling results



Results of groundwater samples collected in April 2023

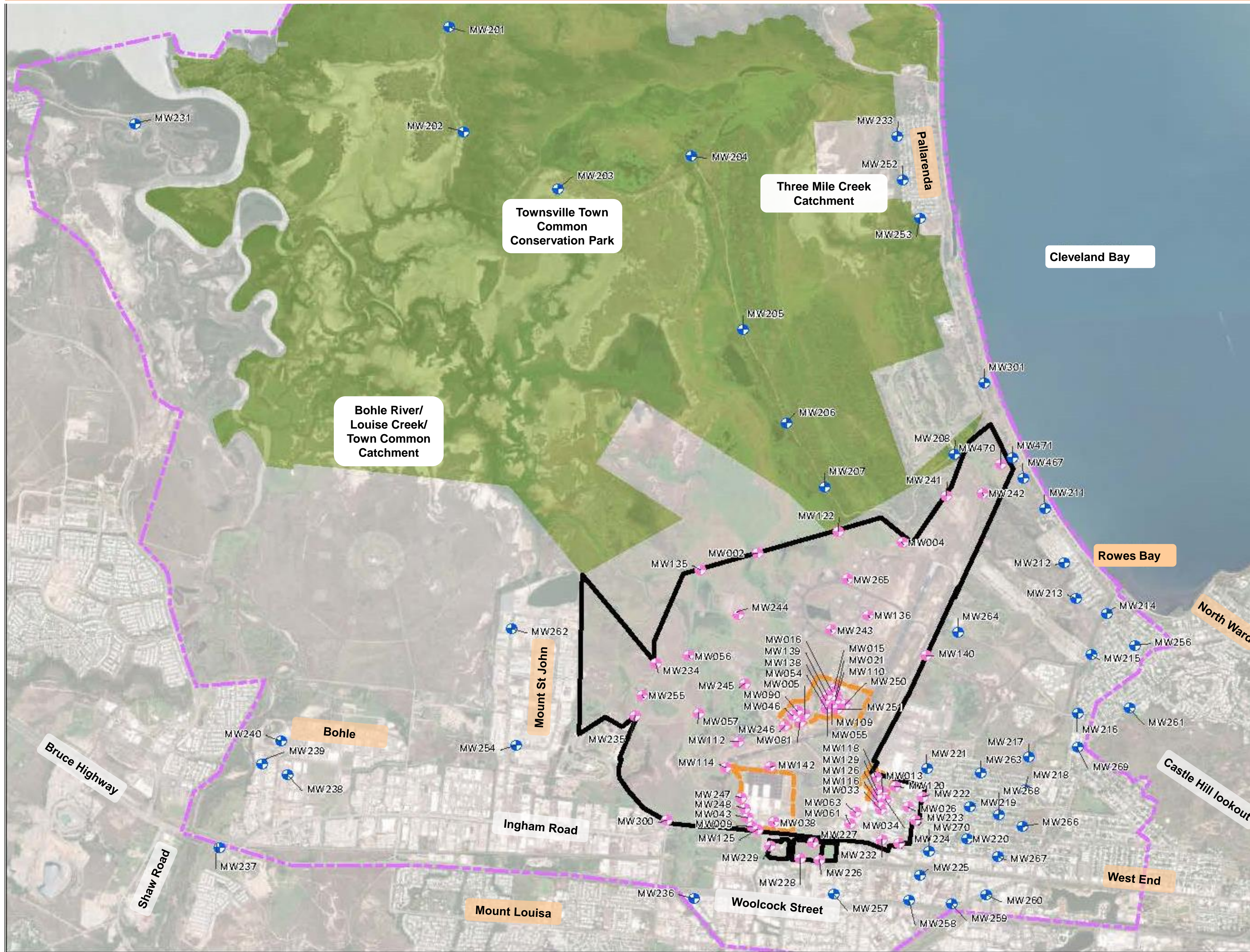
- **Green** represents results where PFAS was not detected in groundwater.
- **Yellow** is below drinking water guidelines.
- **Orange** is below recreational water guidelines
- **Maroon** and **purple** exceed both drinking water and recreational guidelines.

Sampling key findings

- No change to overall extent of PFAS plume, or to human health risk.
- Groundwater results stable or decreasing.
- Isolated increases at some surface water and groundwater locations, mostly within expected range.
- Decreasing results near Former Fire Training Ground following remediation works.
- Seasonal variability in surface water results (higher after wet season).



RAAF Base Townsville – Groundwater monitoring locations



Legend

- Management Area
- Sub-Management Area
- Monitoring Area
- On-base Monitoring Well
- Off-base Monitoring Well



RAAF Base Townsville – Surface water monitoring locations



Legend

- Management Area
- Catchment Boundaries
- Sub-Management Area
- Monitoring Area
- Off-base Surface Water/Sediment Locations
- On-Base Surface Water/Sediment Locations